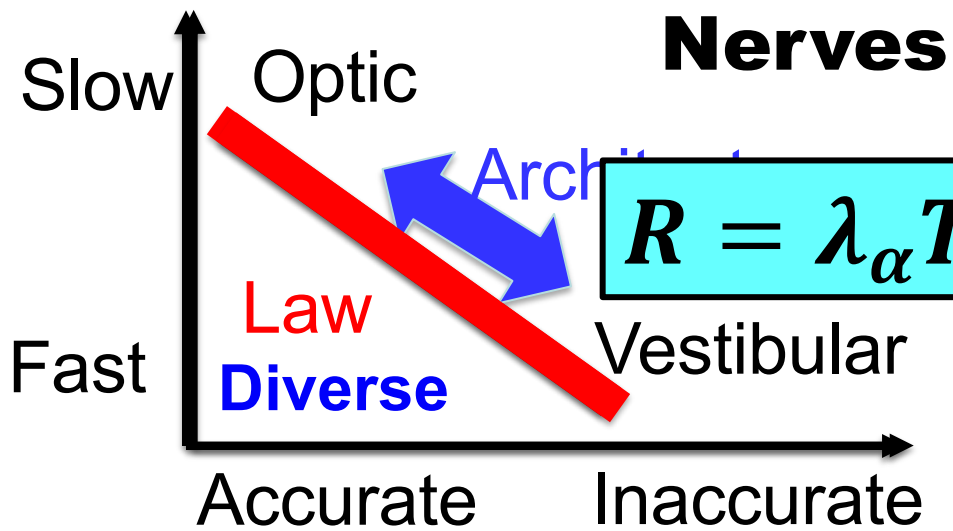
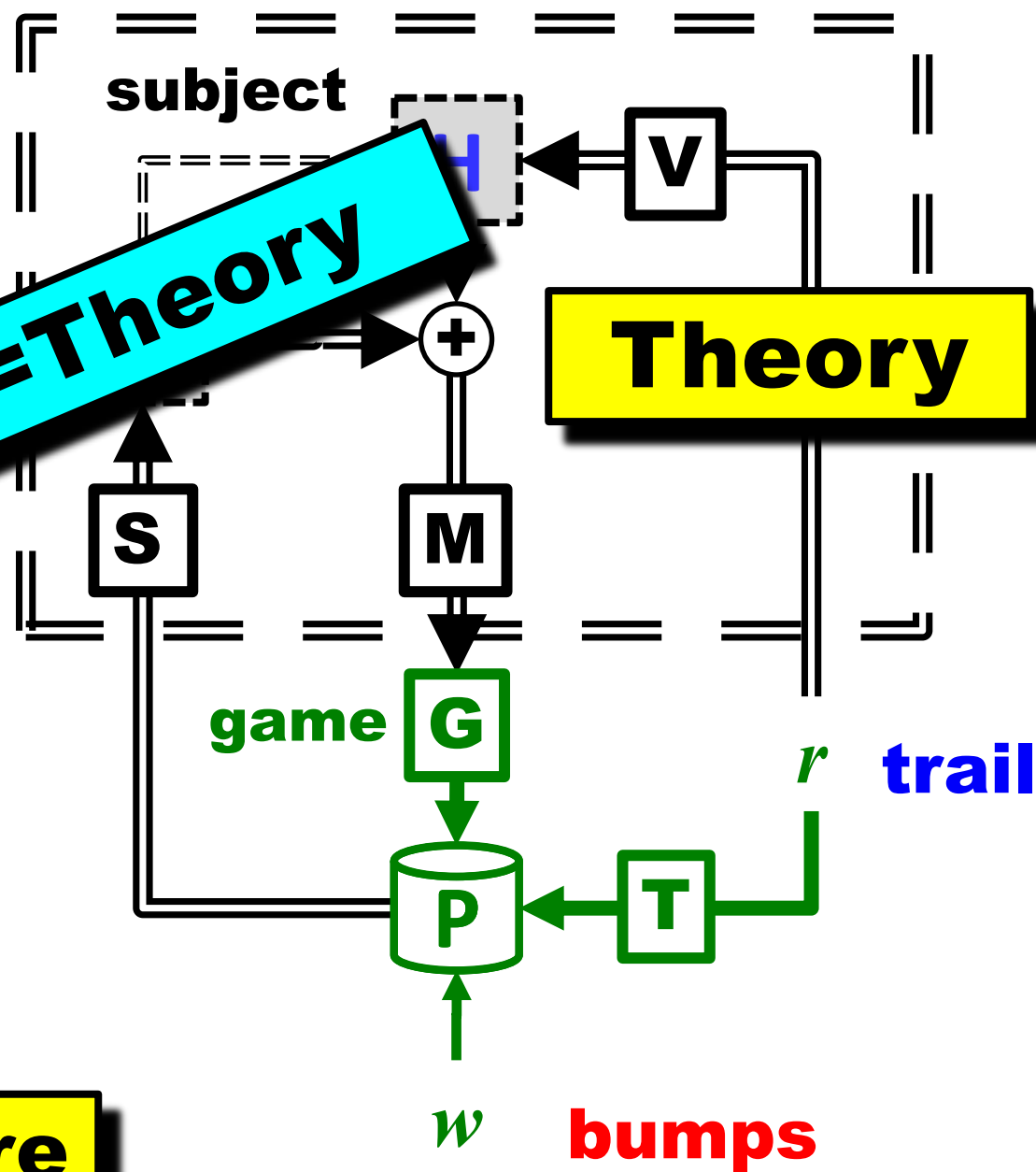


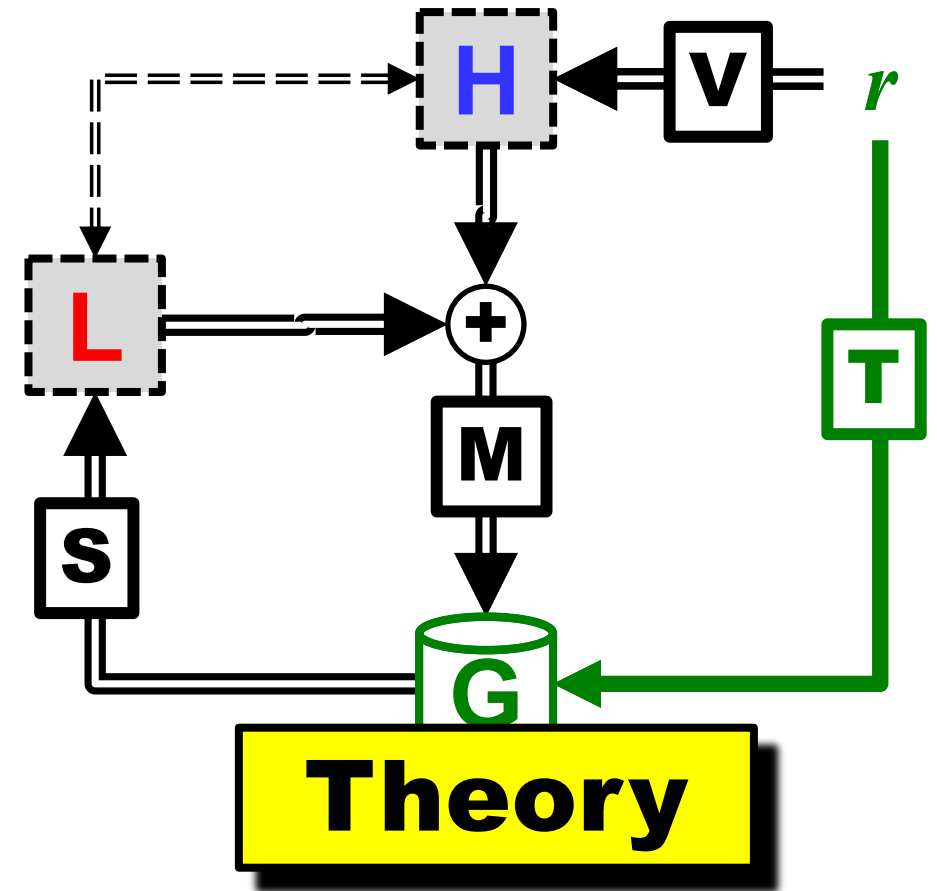
Data=Theory



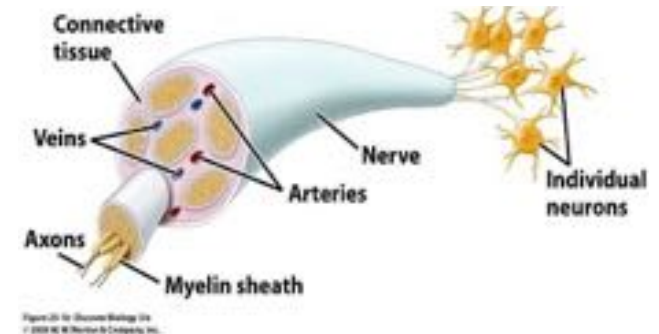
Hardware

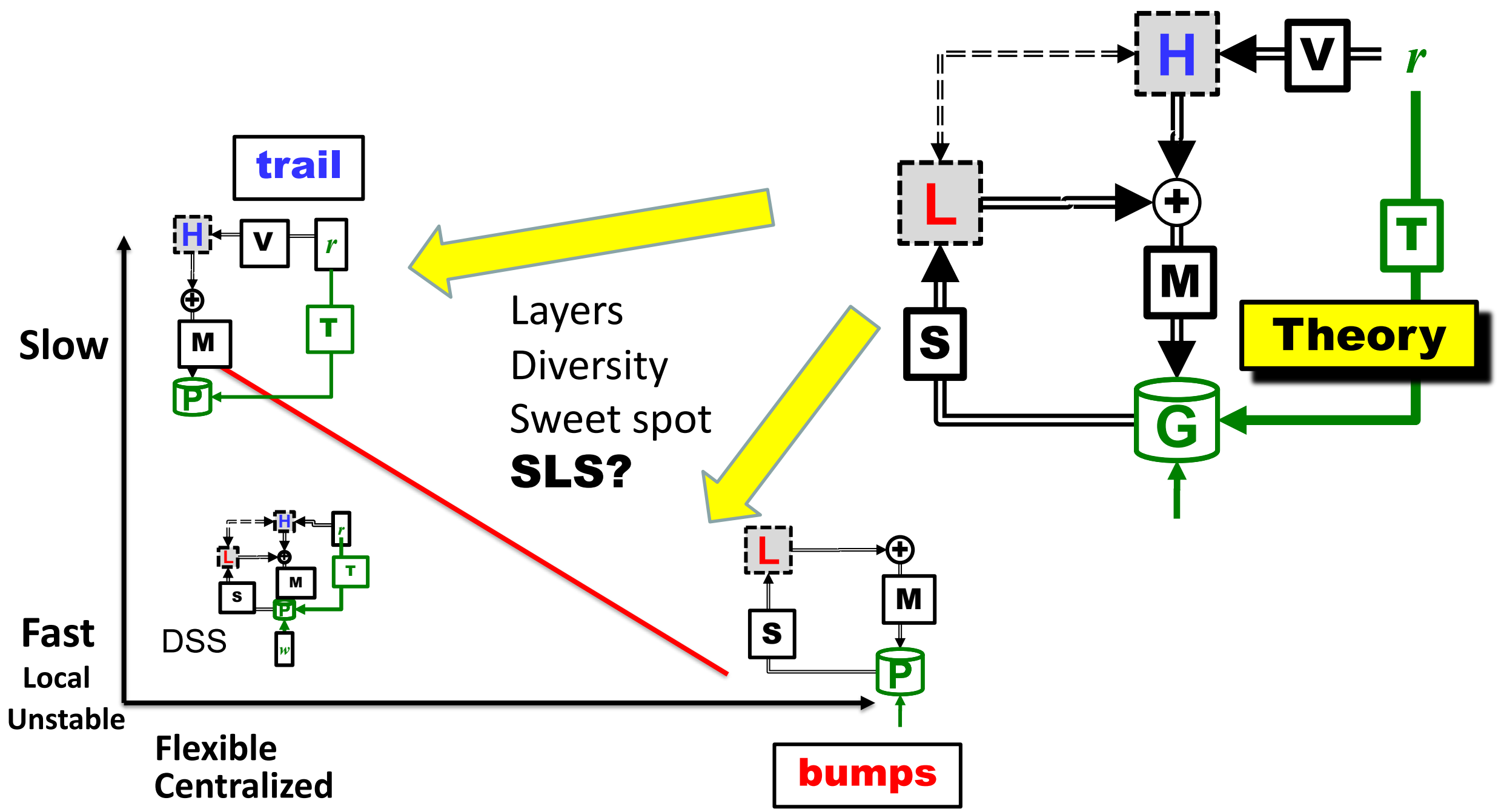


- Scalar trail and bumps
- Math is easy
- (Experiments are easy)
- **Has no additional *internal structure* (e.g. within cortex)**
- Beyond what is in the diagram
- What next?



- **1 dimensional**
- **scalar trail**
- **scaler bump**





Trail

Accurate



Layers

System level

Fast

Diverse

Fast

Bumps

Accurate

Inaccurate

Flexible

Rigid

Slow

Opti

Nerve level

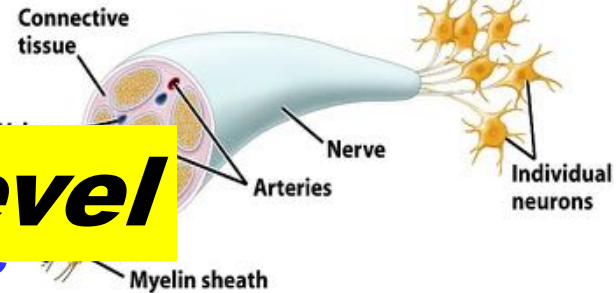


Figure 25-1b Discover Biology 3/e
© 2006 W.W. Norton & Company, Inc.

Law

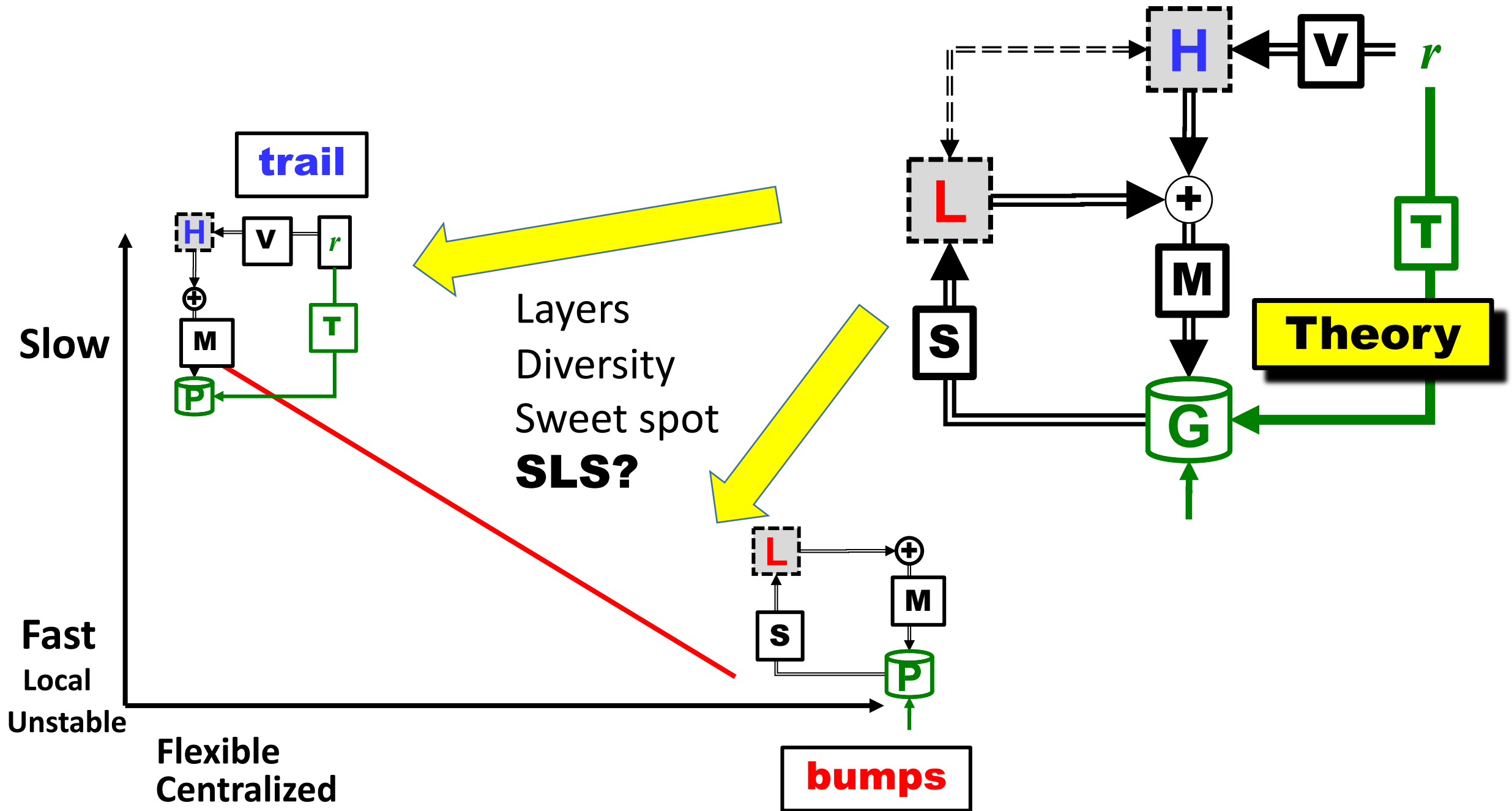
Fast

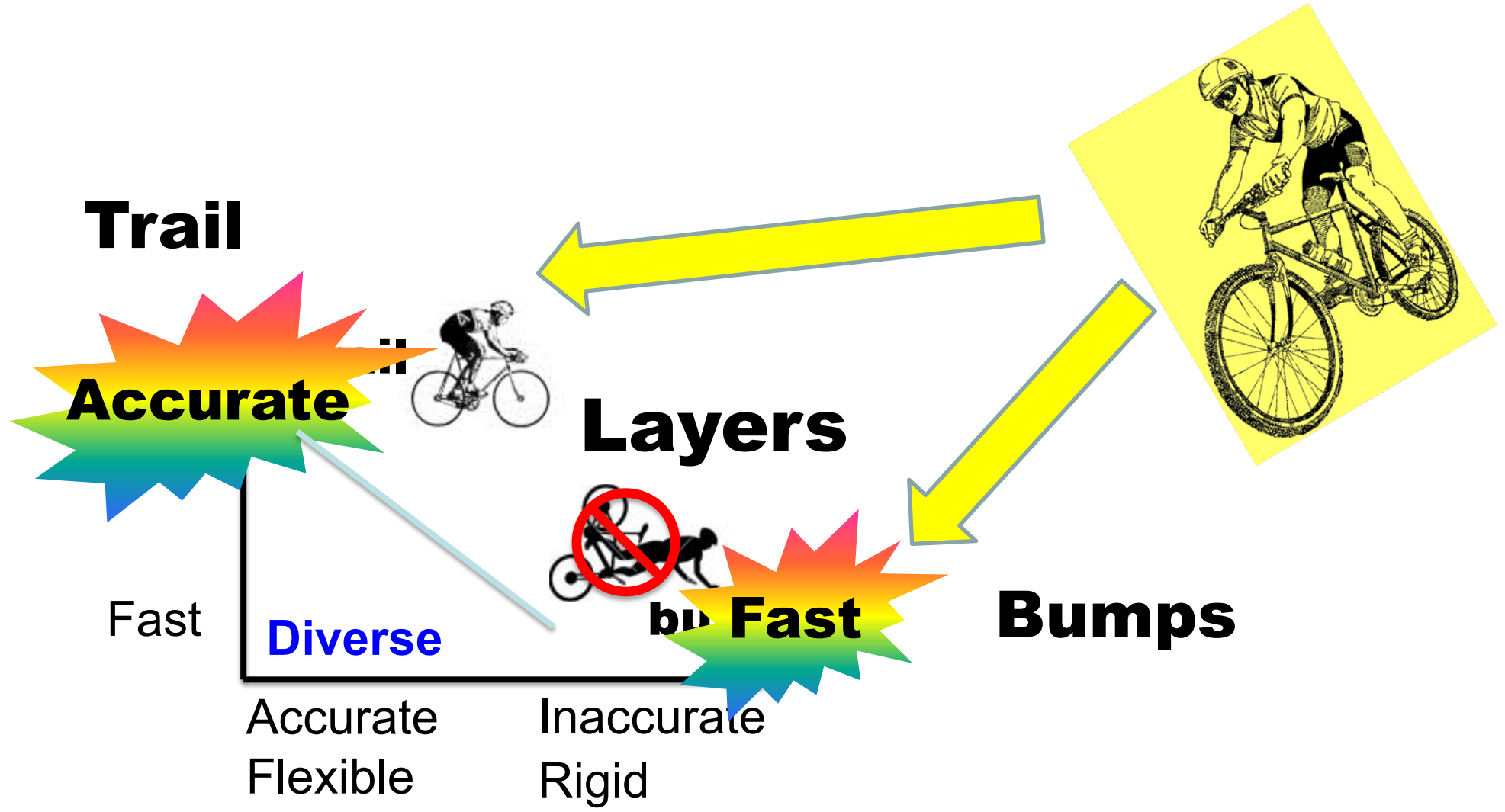
Diverse

Vestibular

Accurate

Inaccurate





Guidance

~~Trail~~

Accurate



Layers



Fast

~~Bumps~~

Control

Fast

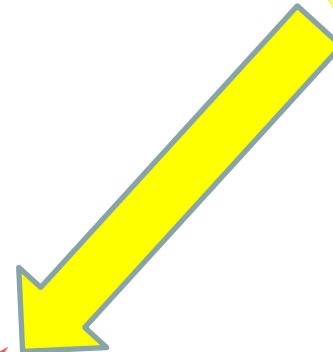
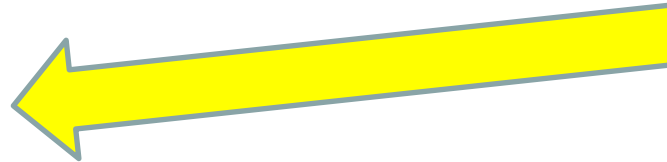
Diverse

Accurate

Flexible

Inaccurate

Rigid



Navigation

Guidance

~~Trail~~

Accurate



Layers



Fast

~~Bumps~~

Control

Fast

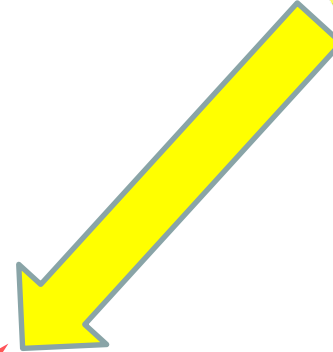
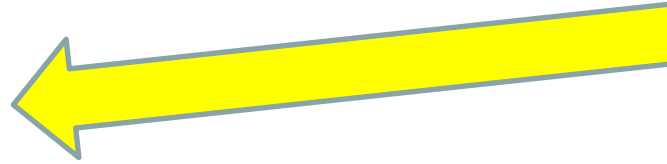
Diverse

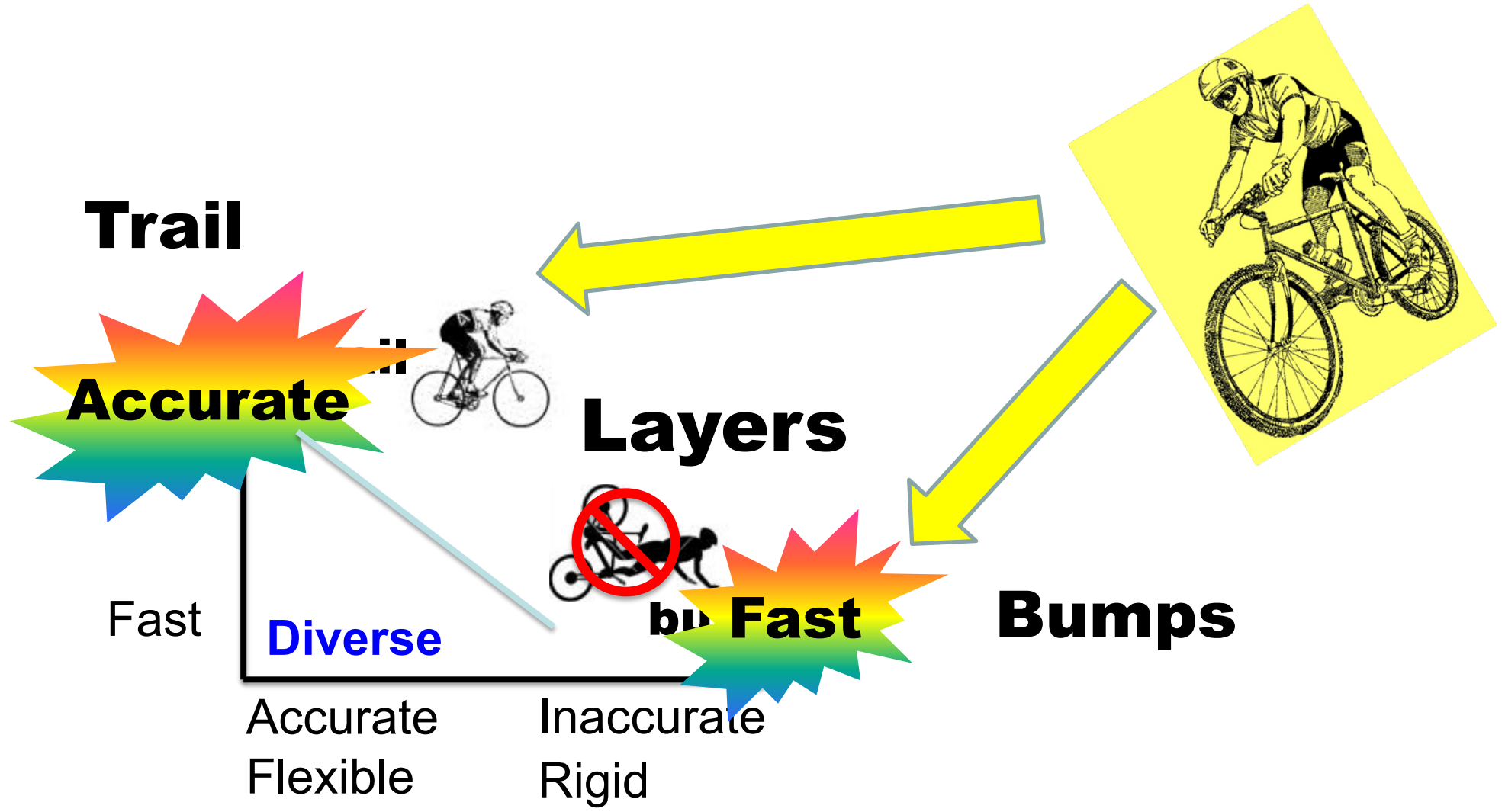
Accurate

Flexible

Inaccurate

Rigid





Trail

Accurate



Layers

System level

Fast

Diverse

Fast

Bumps

Accurate

Inaccurate

Flexible

Rigid



Trail

Accurate



Layers

System level

Fast

Diverse

Fast

Bumps

Accurate

Inaccurate

Flexible

Rigid

Slow

Opti

Nerve level

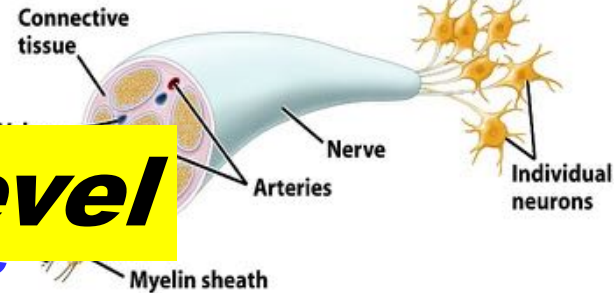


Figure 25-1b Discover Biology 3/e
© 2006 W.W. Norton & Company, Inc.

Law

Fast

Diverse

Vestibular

Accurate

Inaccurate

Trail

Accurate



Layers

System level

Fast

Diverse



Fast

Bumps

Accurate

Inaccurate

Flexible

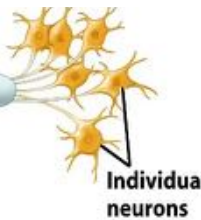
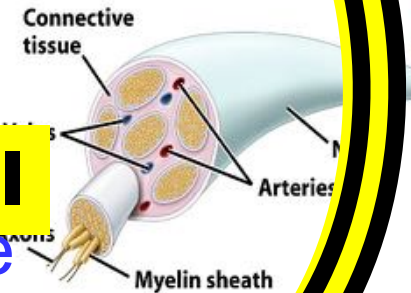
Rigid

Accurate

Opti

Nerve level

Architecture



Fast

Diverse

Law

Vestib

Fast

Accurate

Inaccurate

- Simple map across levels
- Special, convenient case

Trail

Accurate

Layers



System level

Sweet Spot



Fast

Bumps

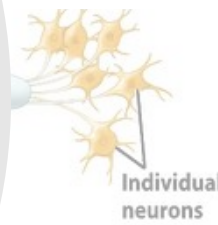
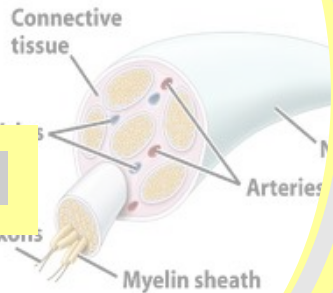
Fast

Accurate
Flexible

Inaccurate
Rigid

Accurate

Nerve level



Architecture

Diverse

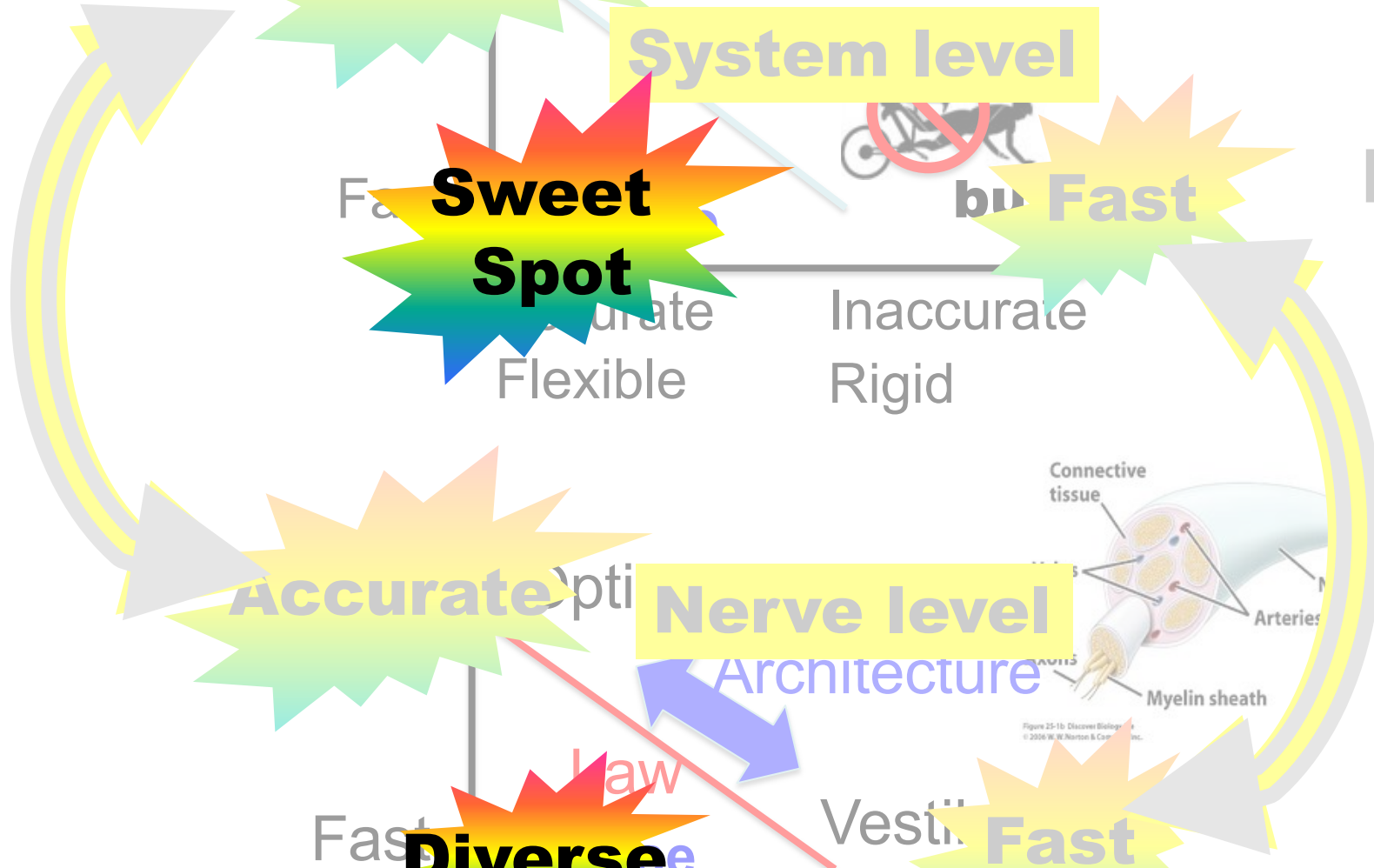
Fast

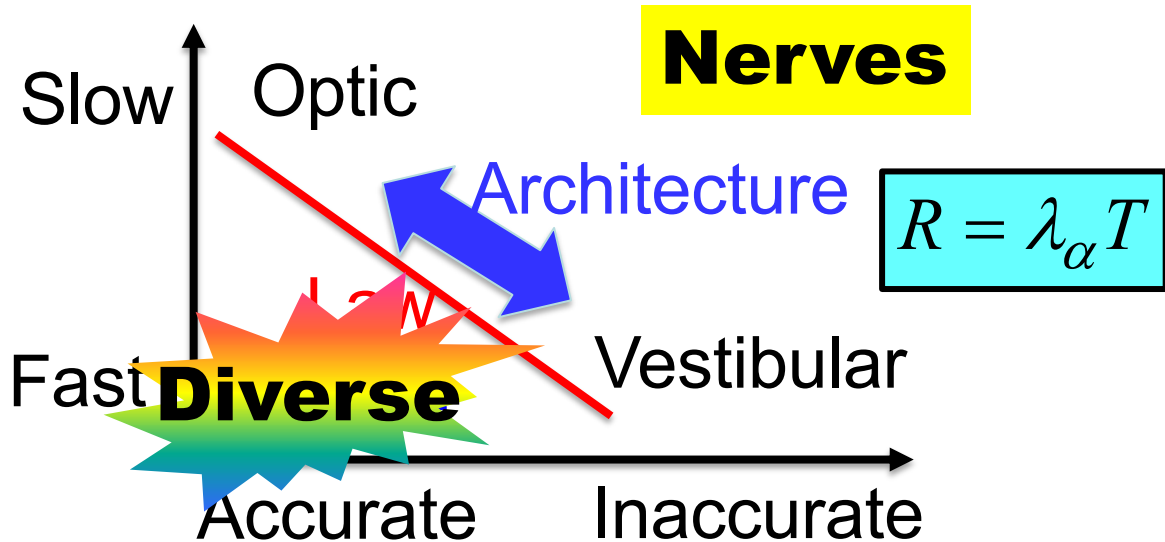
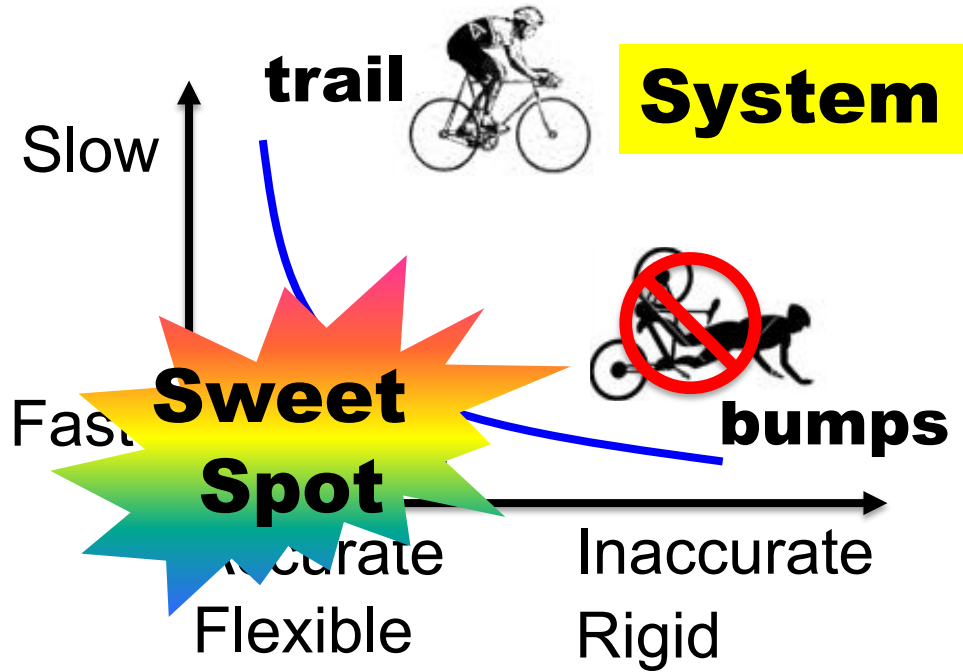
Fast

Accurate

Inaccurate

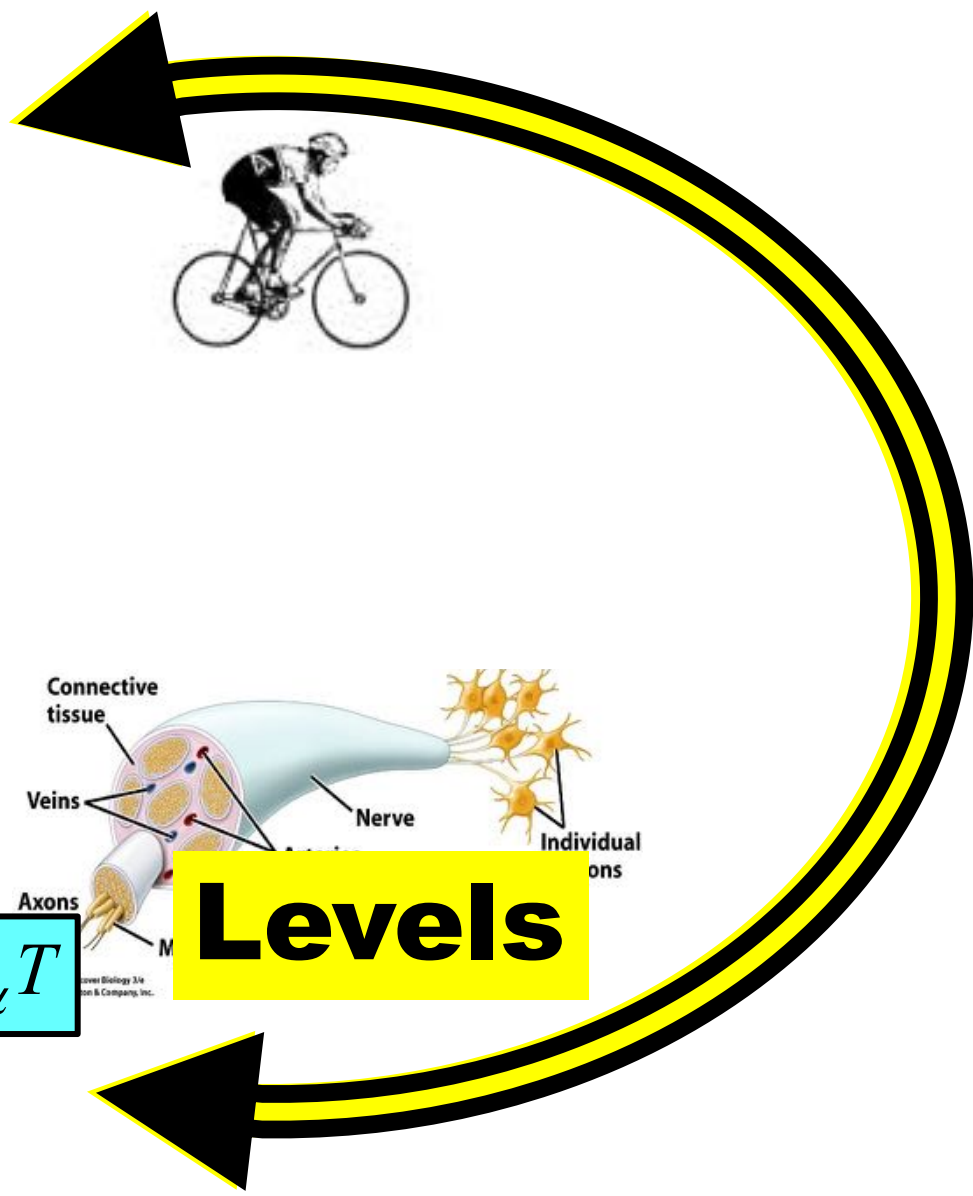
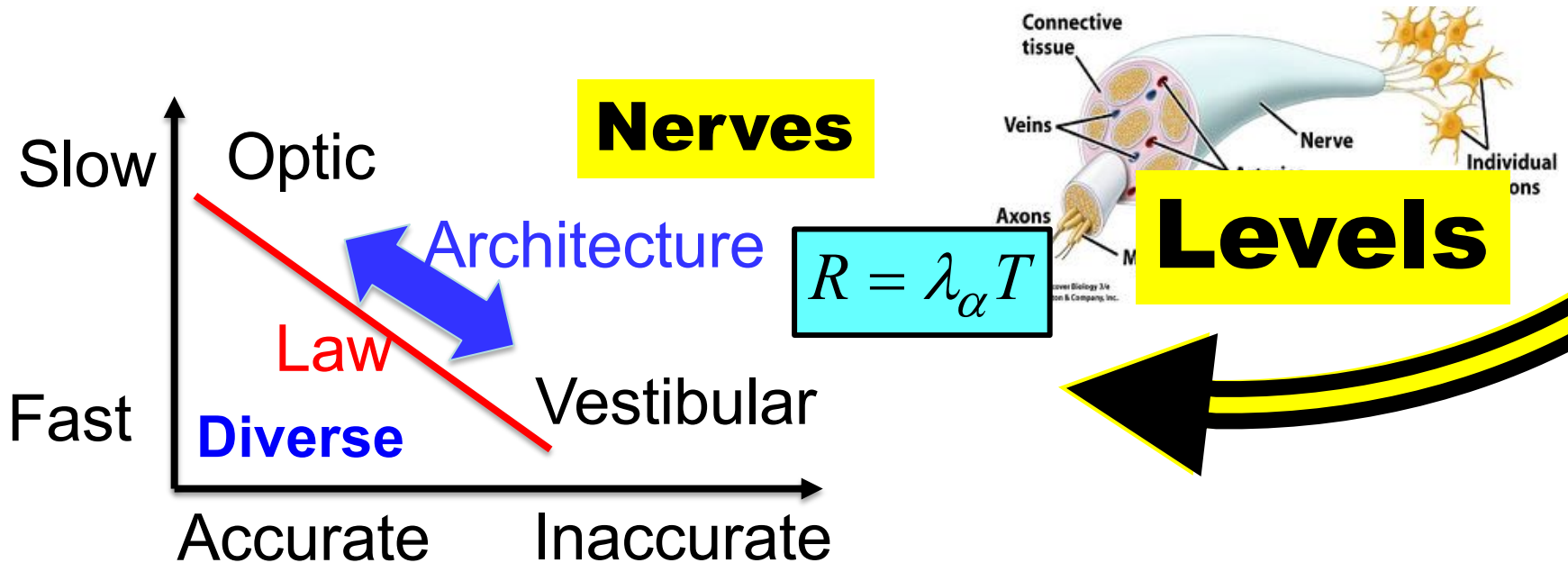
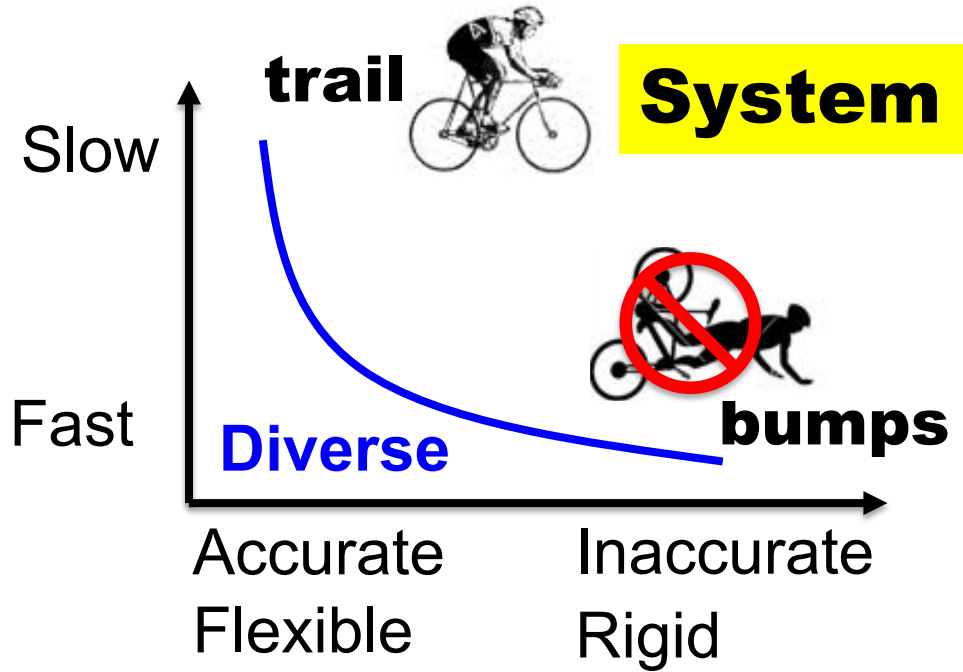
- Simple map across levels
- Special, convenient case



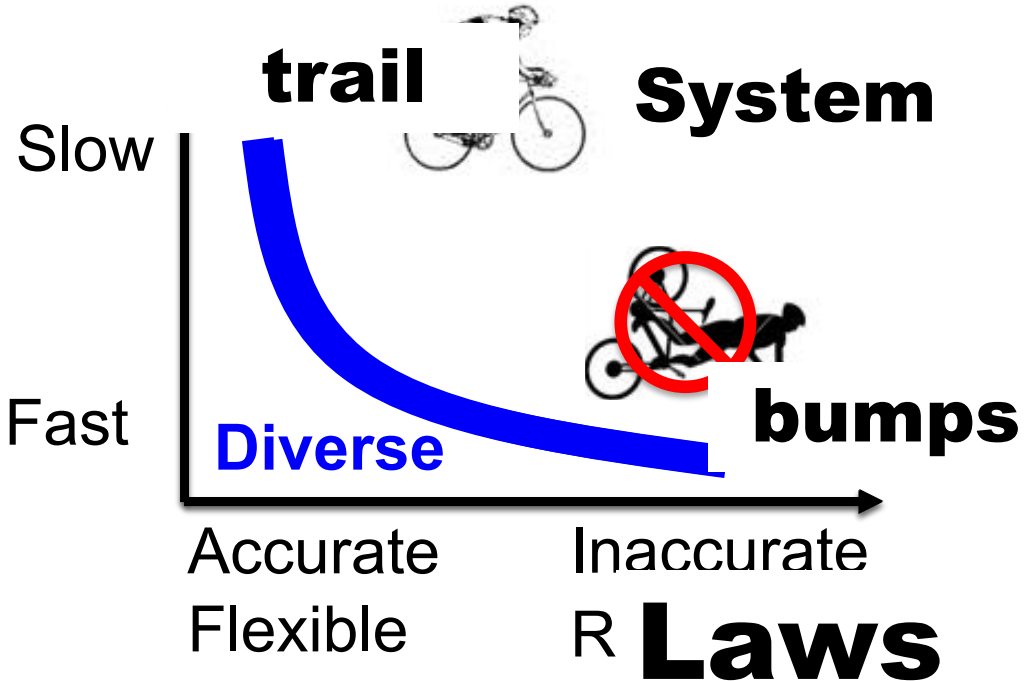


Diversity enabled sweet spot

- The point of architecture
- Combines diverse layers and levels
- To create functionality that no component alone can achieve
- **Diversity crosses levels and layers**



What is possible.



Every layer and level has its own laws.

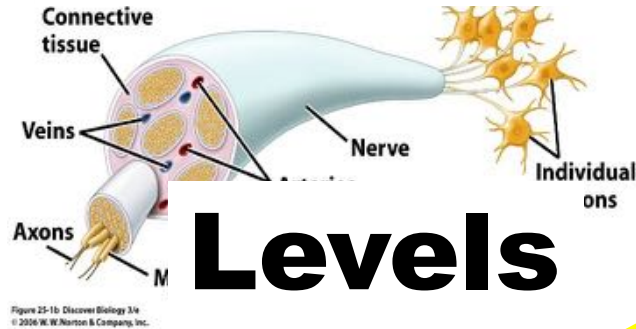
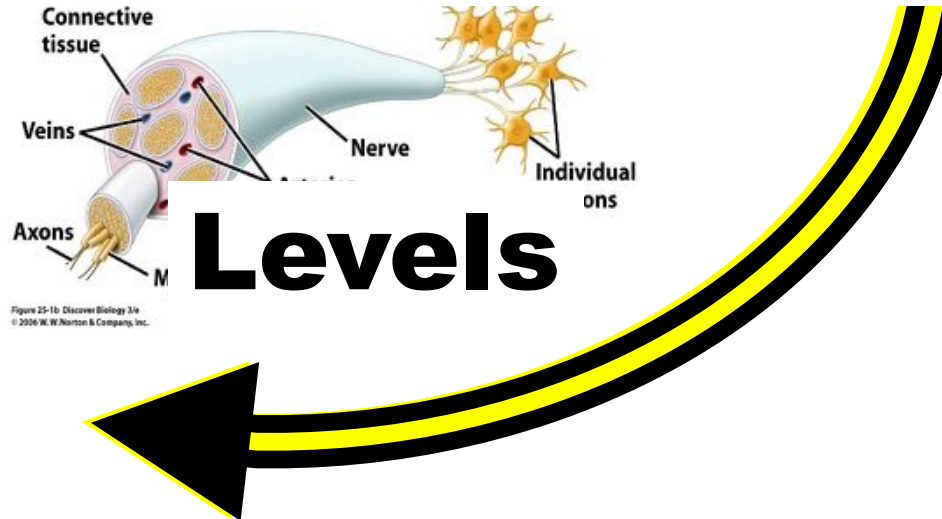
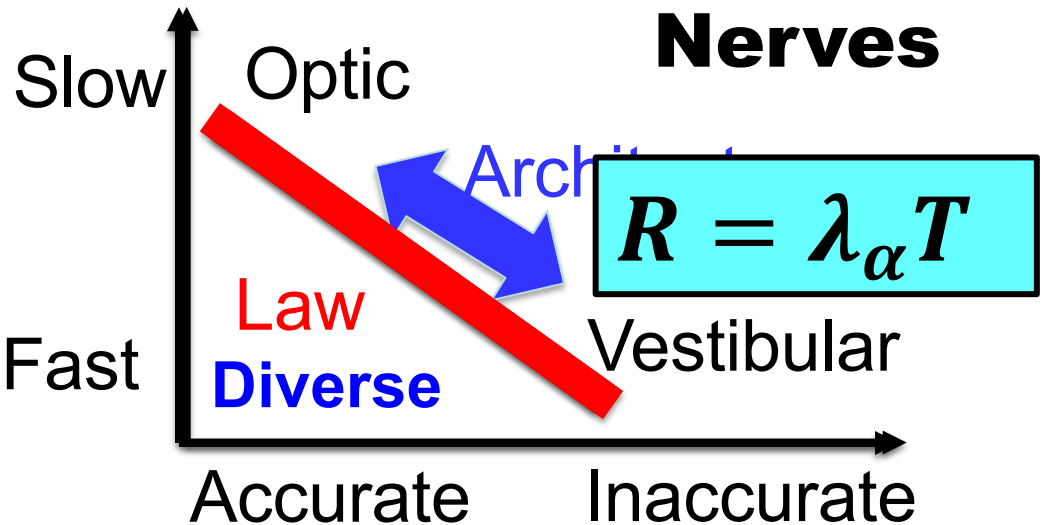
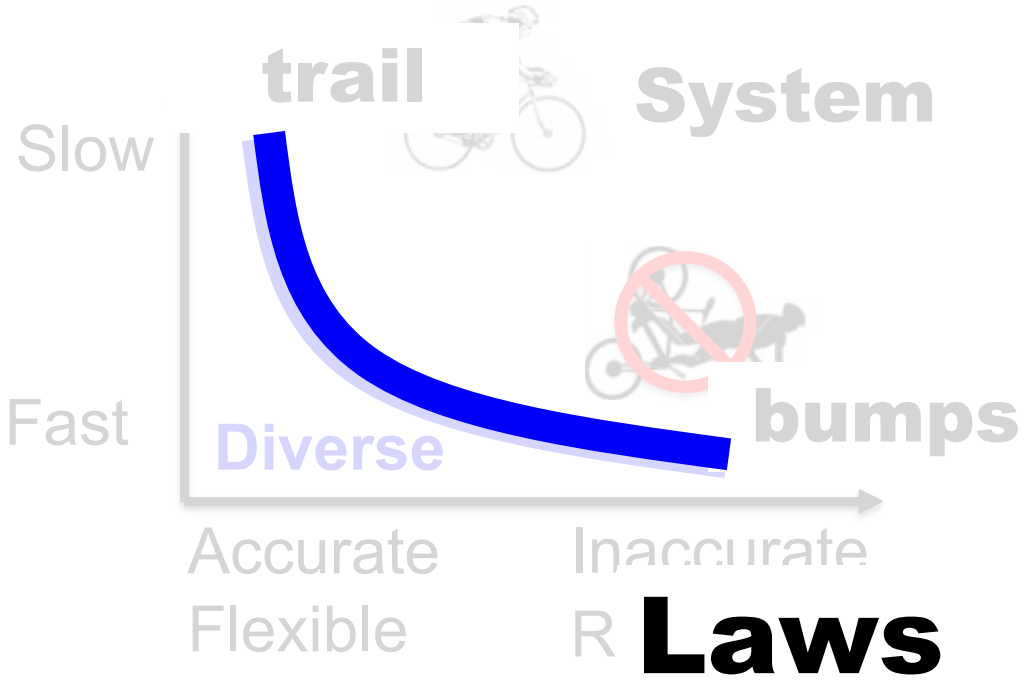


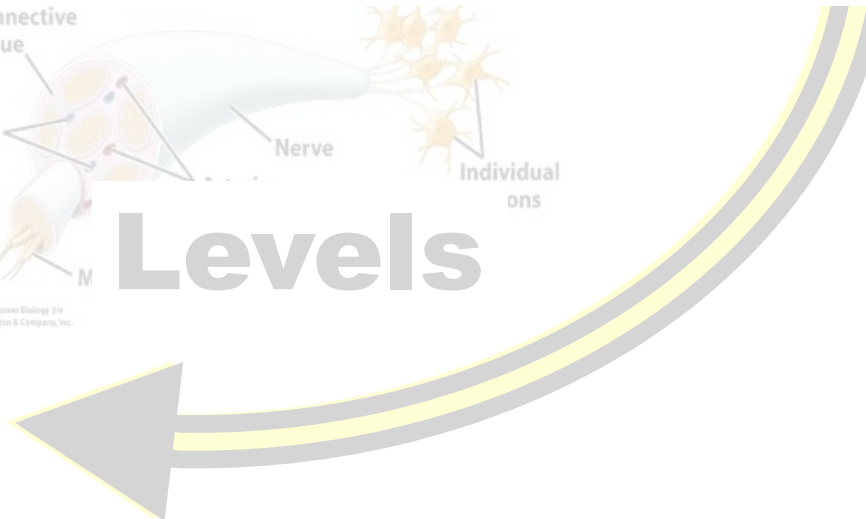
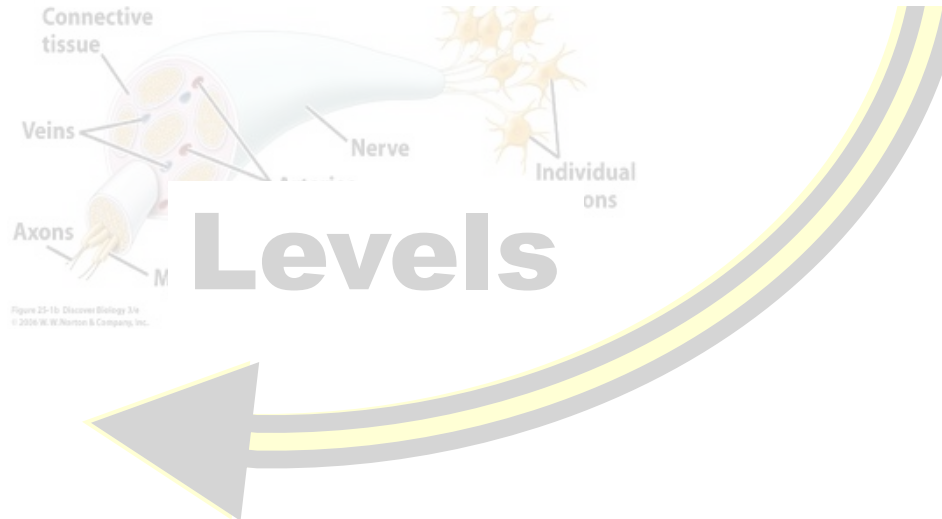
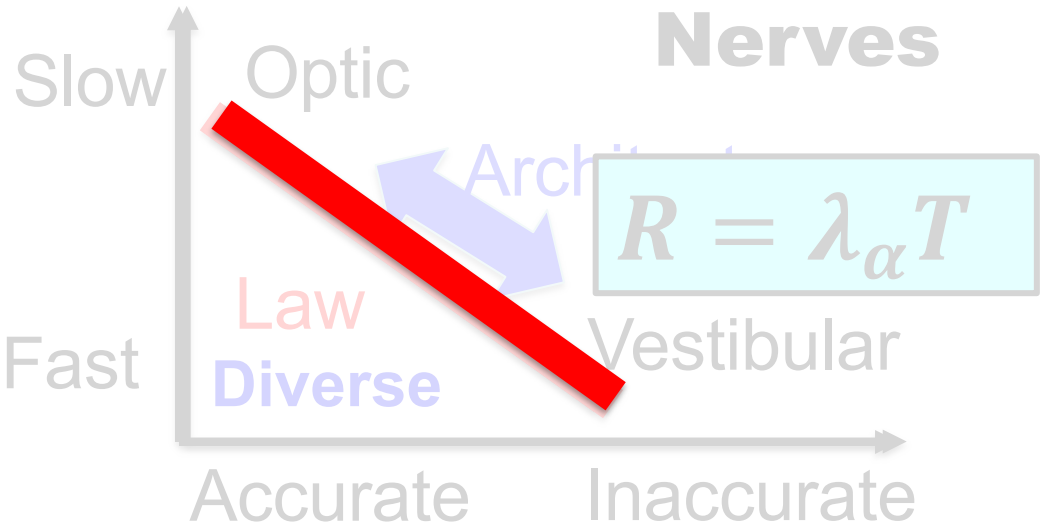
Figure 25-1b. Discover Biology 3/e © 2004 W.W. Norton & Company, Inc.

Levels

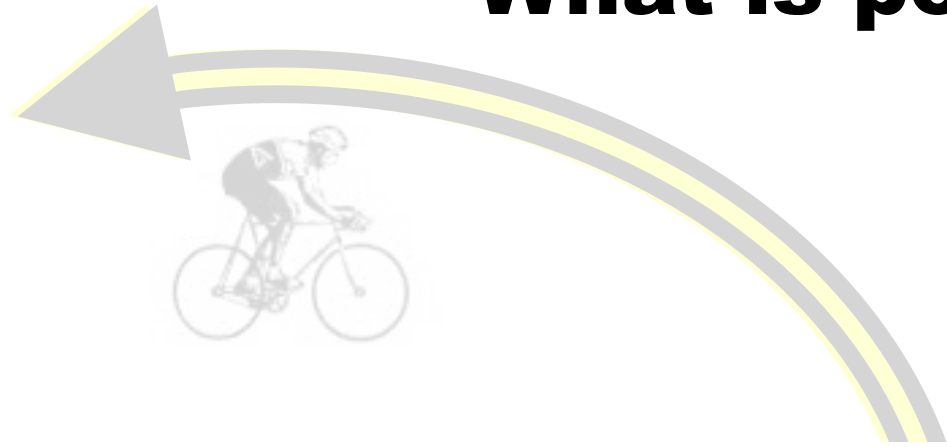
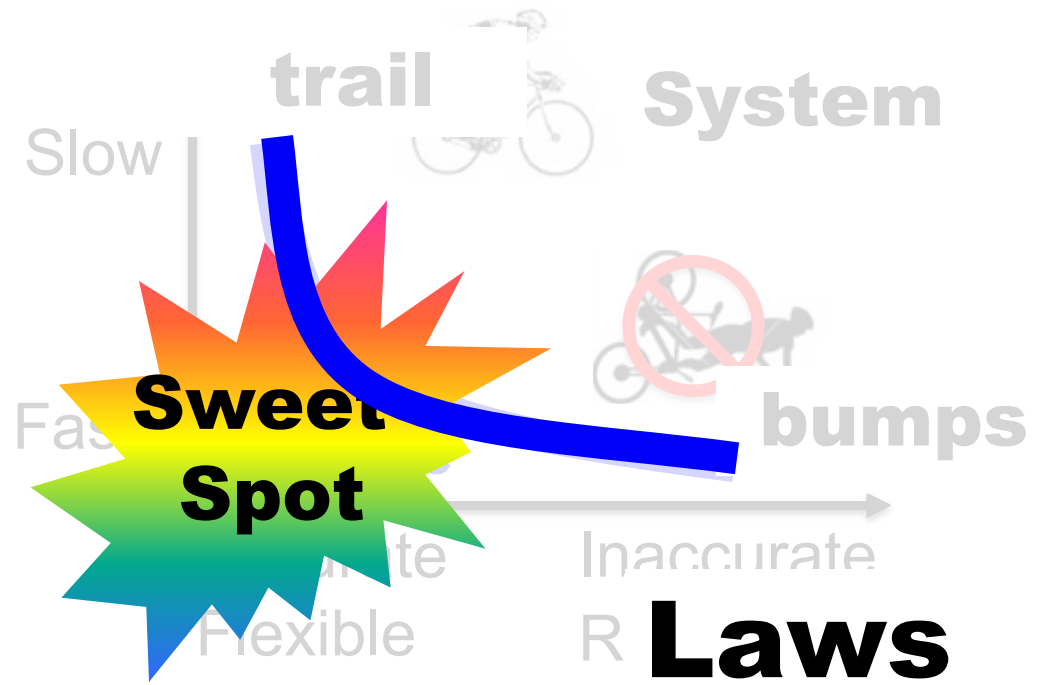
What is possible.



Every layer and level has its own laws.



What is possible.



(only) architecture can create sweet spots.

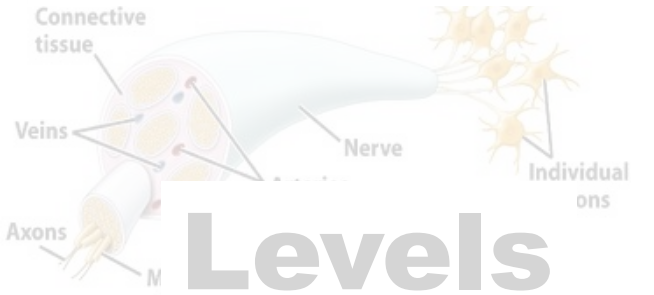
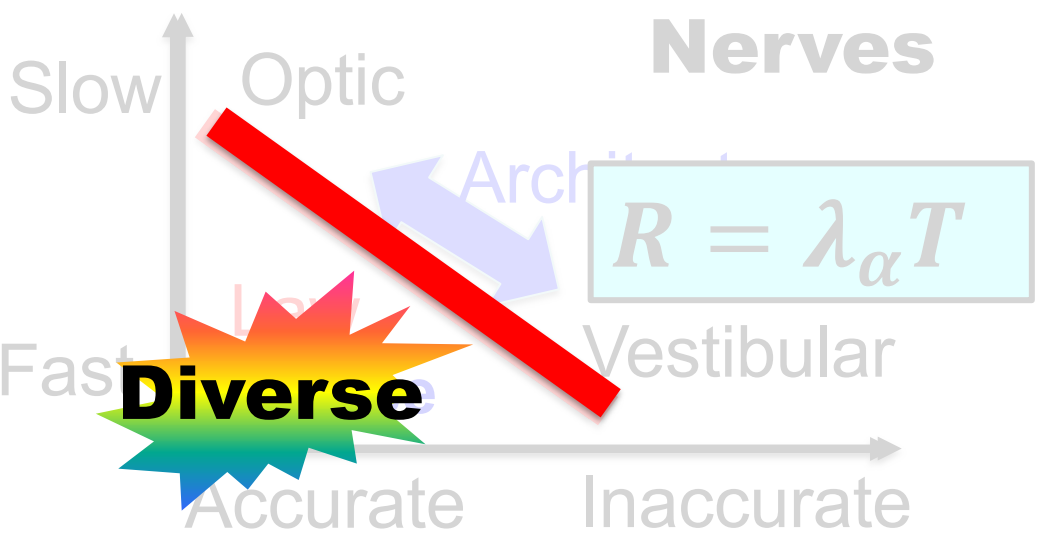
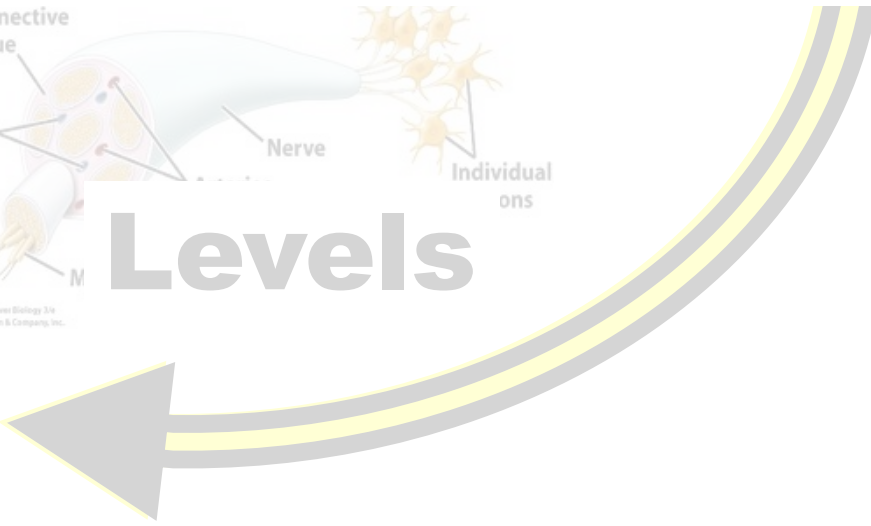
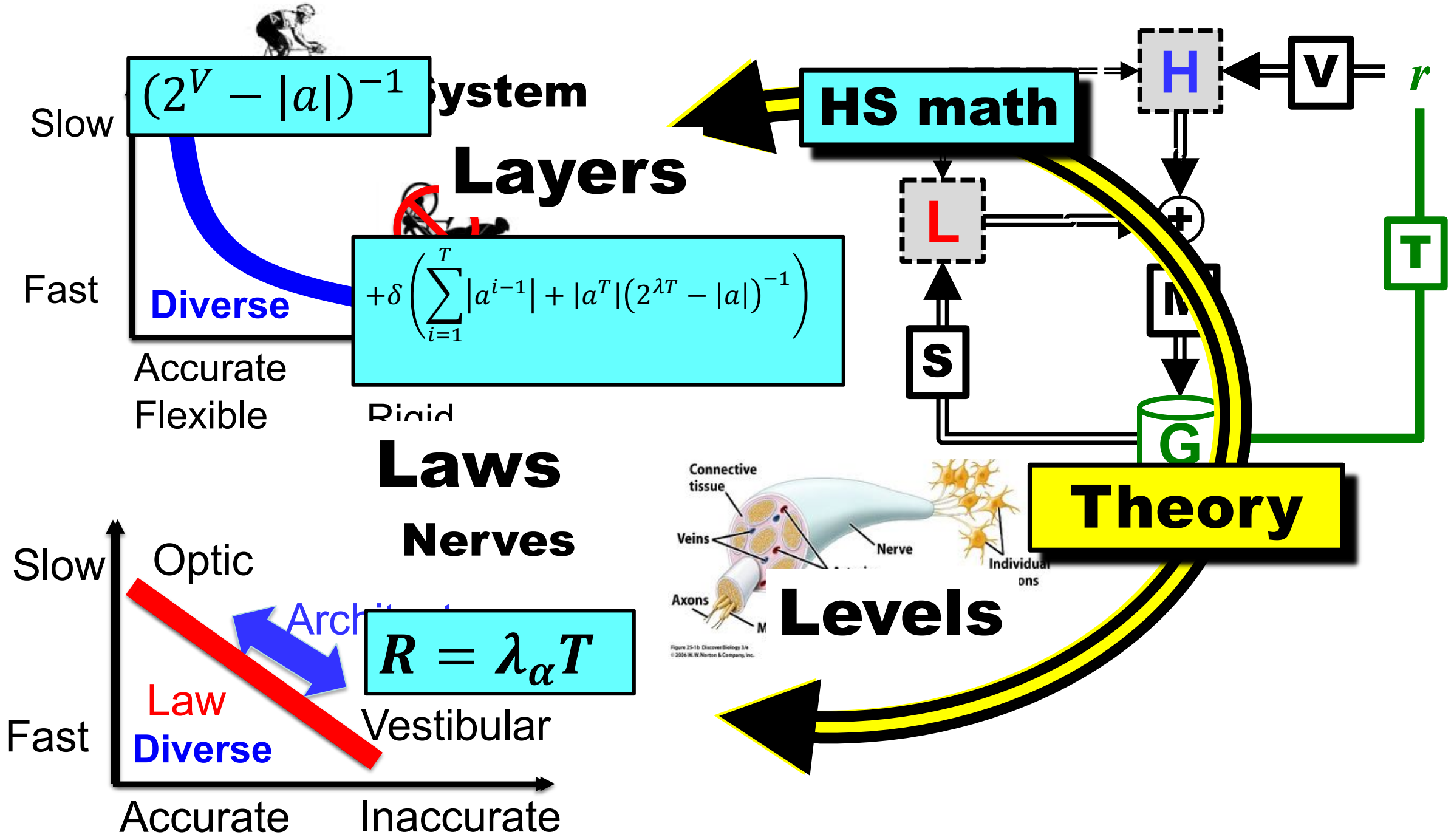


Figure 25-19. Discover Biology 3/e © 2004 W. H. Norton & Company, Inc.



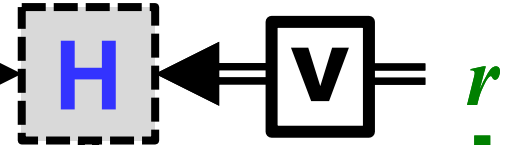


$(2^V - |a|)^{-1}$ System

Layers

$$+\delta \left(\sum_{i=1}^T |a^{i-1}| + |a^T| (2^{\lambda T} - |a|)^{-1} \right)$$

HS math



Laws

Nerves

Slow Optic

Fast **Law Diverse**

Vestibular

Accurate

Inaccurate

$R = \lambda_\alpha T$

Theory

Levels

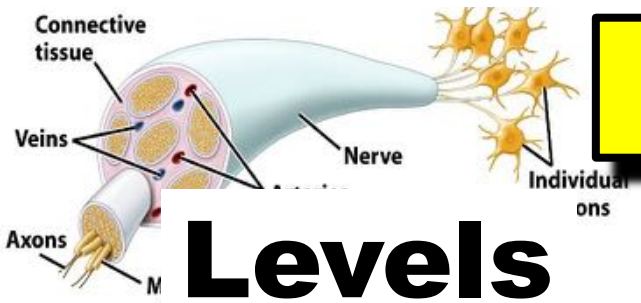


Figure 25-1b. Discover Biology 3/e
© 2004 W.W. Norton & Company, Inc.

$$(2^V - |a|)^{-1}$$

$$+ \delta \left(\sum_{i=1}^T |a^{i-1}| + |a^T| (2^{\lambda T} - |a|)^{-1} \right)$$

Laws

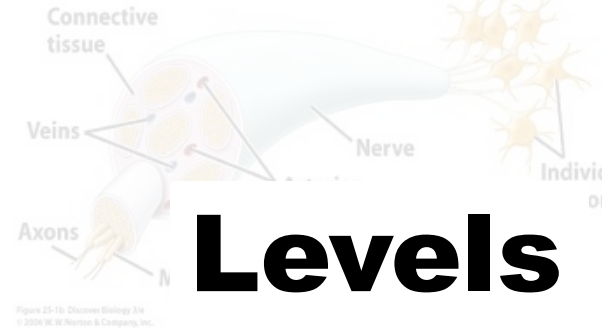
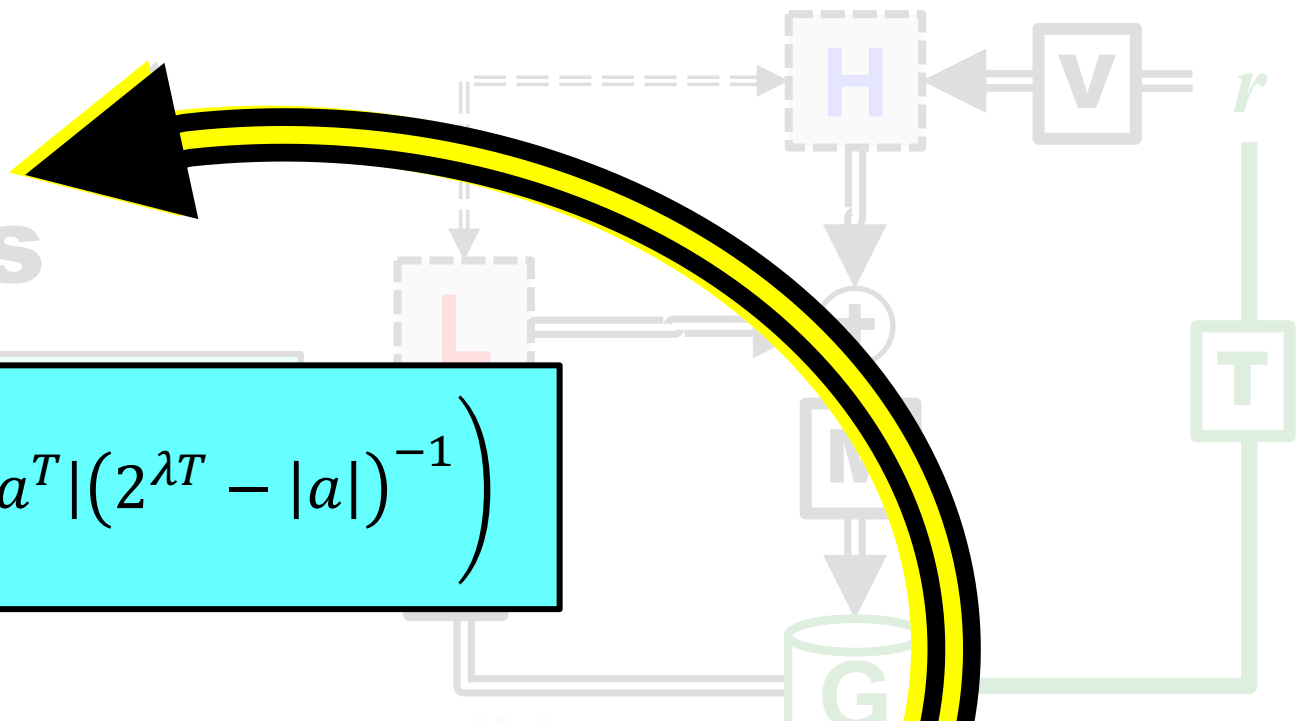
Nerves

$$R = \lambda_{\alpha} T$$

Theory

Levels

Easy



System
Layers
Diverse
Accurate
Flexible
Rigid
Optic
Architecture
Law
Diverse
Vestibular
Accurate
Inaccurate

Architecture

$$(2^V - |a|)^{-1}$$

System

Layers

Diversity enabled Sweet Spot

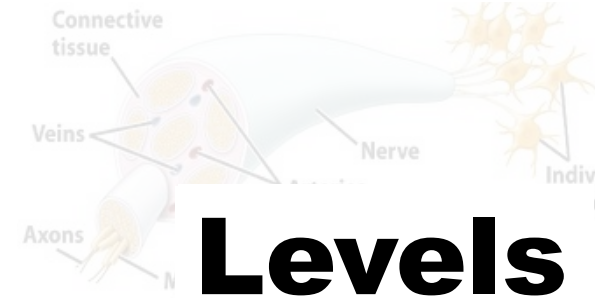
$$+\delta \left(\sum_{i=1}^T |a^{i-1}| + |a^T| (2^{\lambda T} - |a|)^{-1} \right)$$

Flexible

Rigid

Laws

Nerves



Theory

Levels

$$R = \lambda_{\alpha} T$$

Diverse

Optic

Vestibular

Accurate

Inaccurate

Easy

Architecture

Layers

Slow $(2^V - |a|)^{-1}$ system

$$+\delta \left(\sum_{i=1}^T |a^{i-1}| + |a^T| (2^{\lambda T} - |a|)^{-1} \right)$$

Laws

Nerves

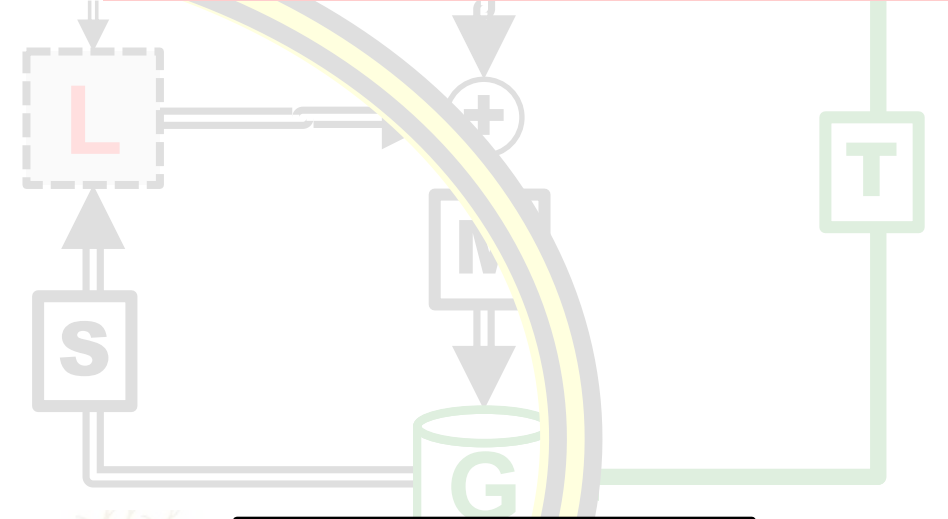
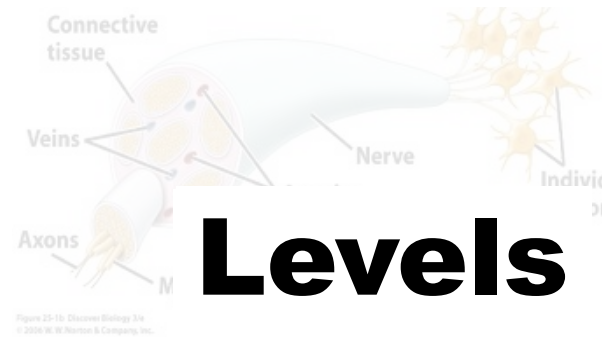
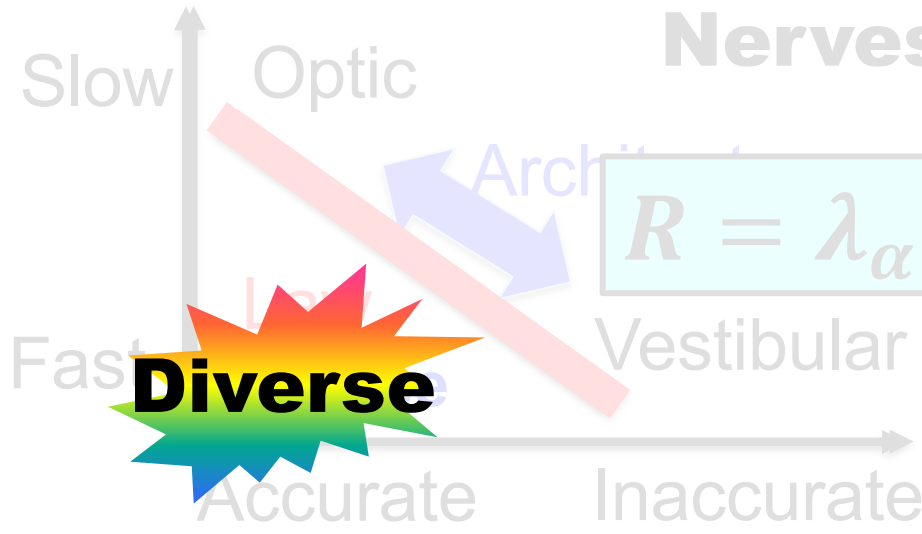
$$R = \lambda_{\alpha} T$$

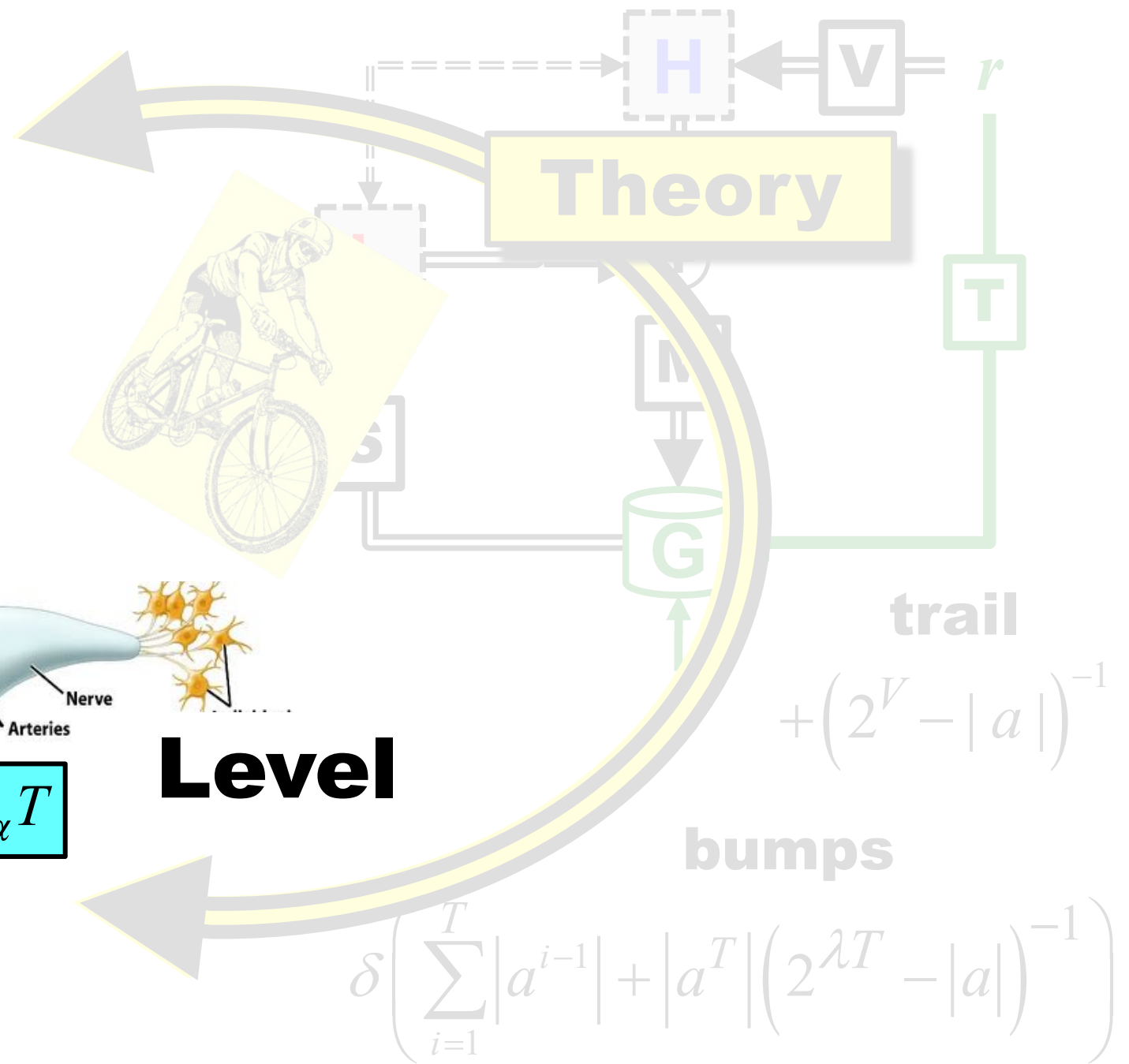
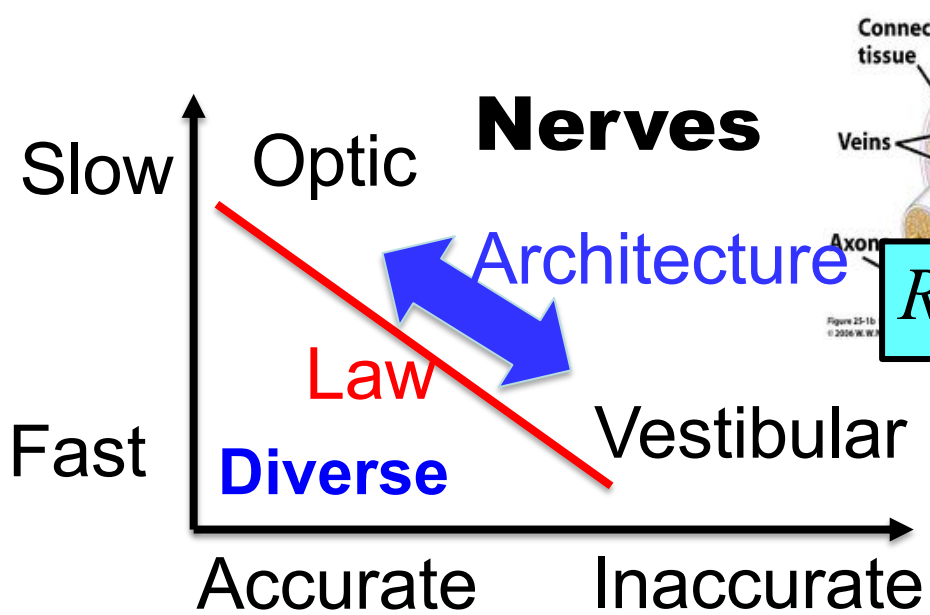
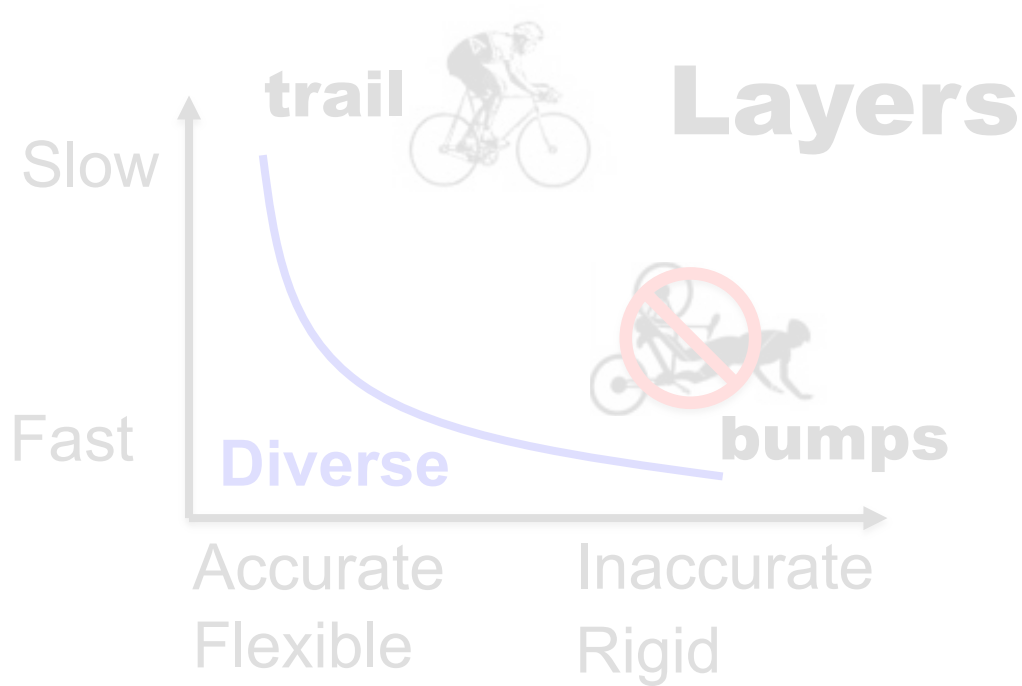
Levels

Theory

Diversity enabled Sweet Spot

Diverse





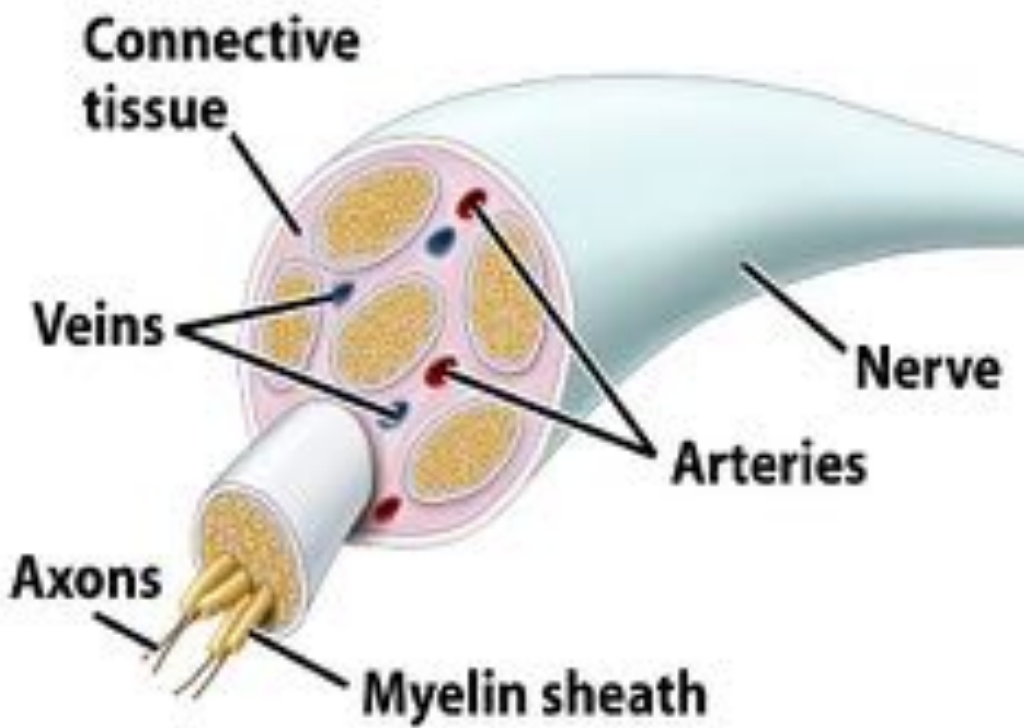
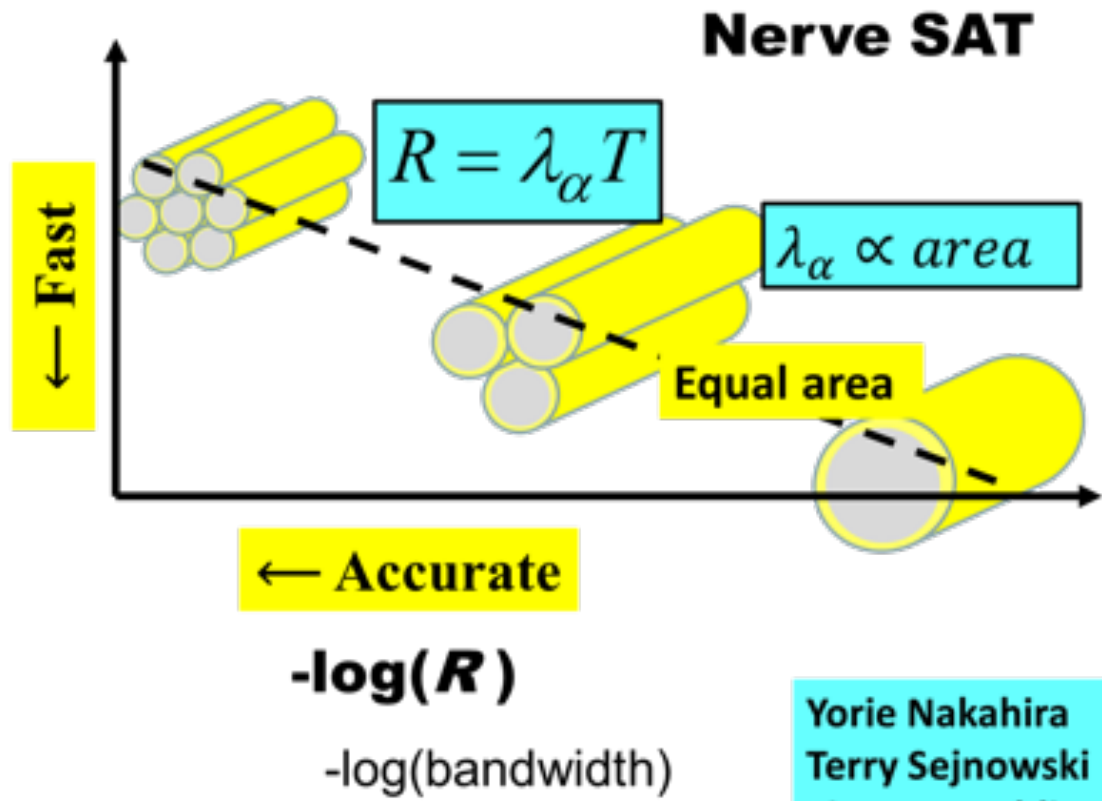
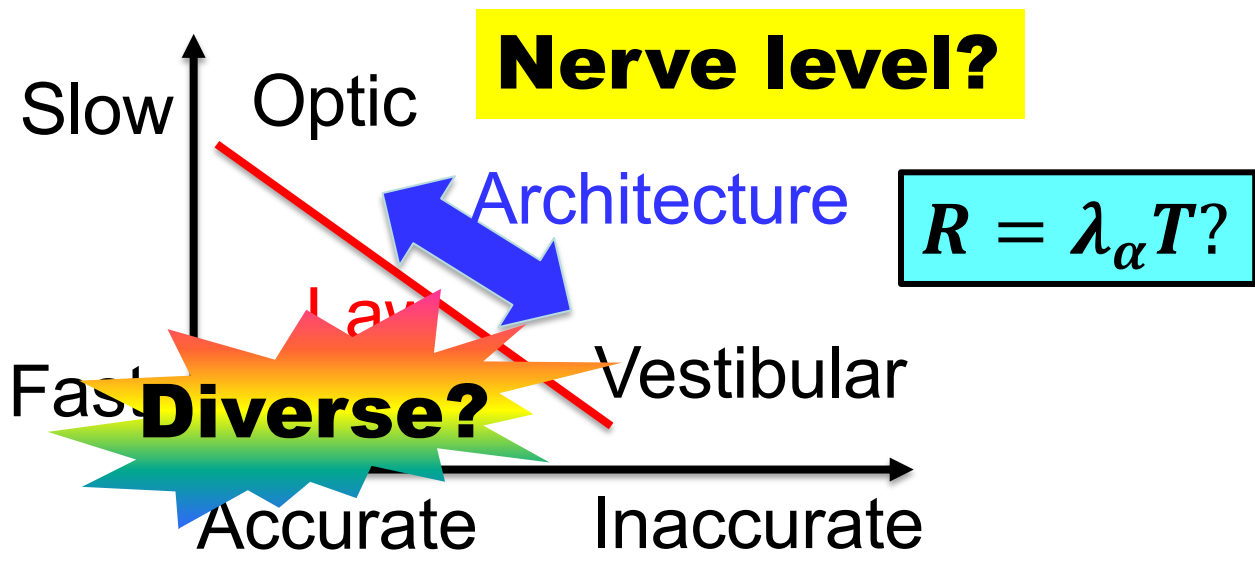


Figure 25-1b Discover Biology 3/e
© 2006 W. W. Norton & Company, Inc.

$\log(T)$
log(delay)



Yorie Nakahira
Terry Sejnowski
Simon Laughlin
(Peter Sterling)



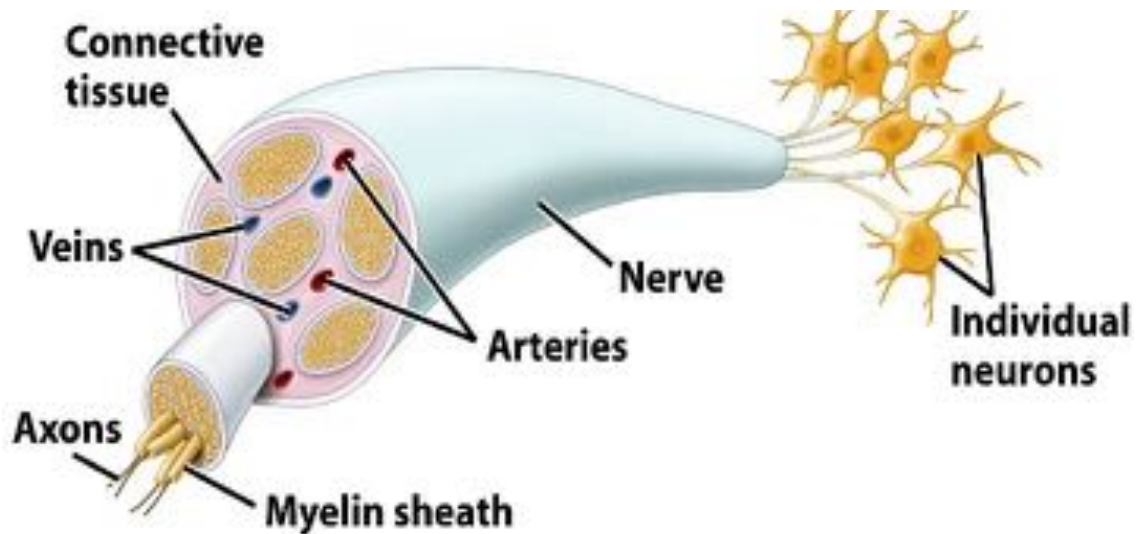
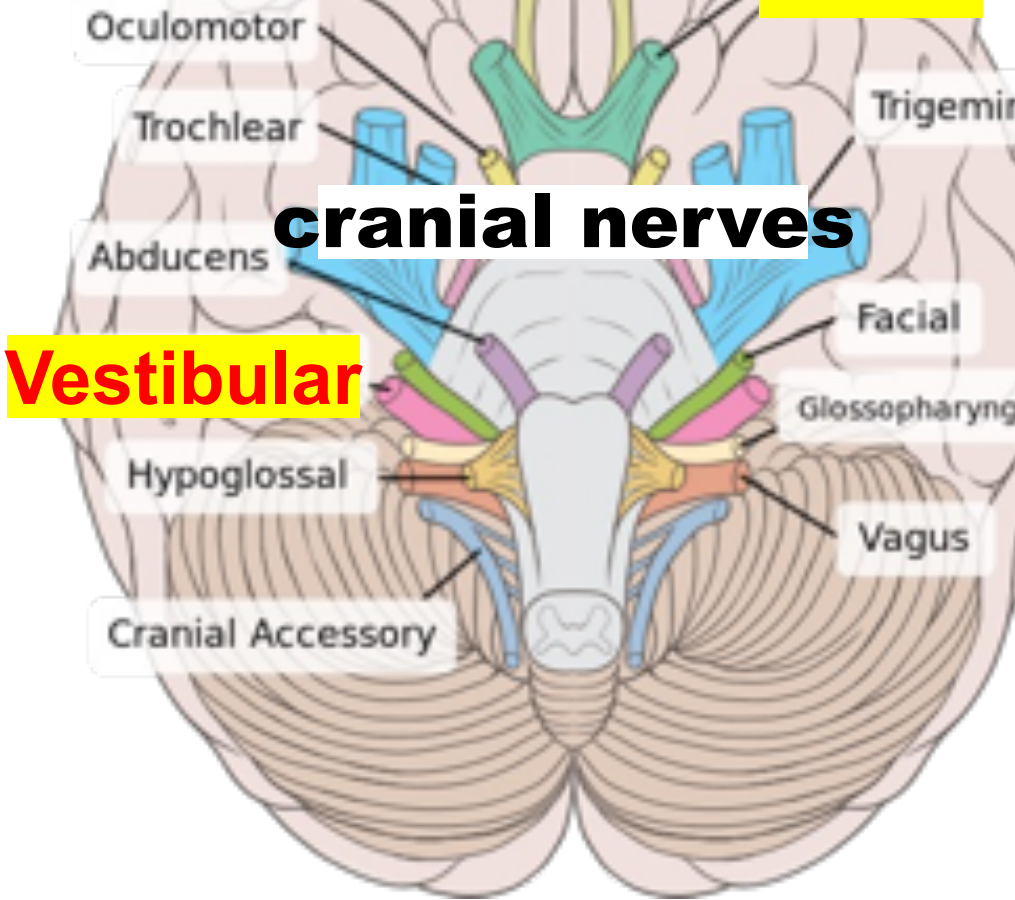


Figure 25-1b Discover Biology 3/e
© 2006 W. W. Norton & Company, Inc.

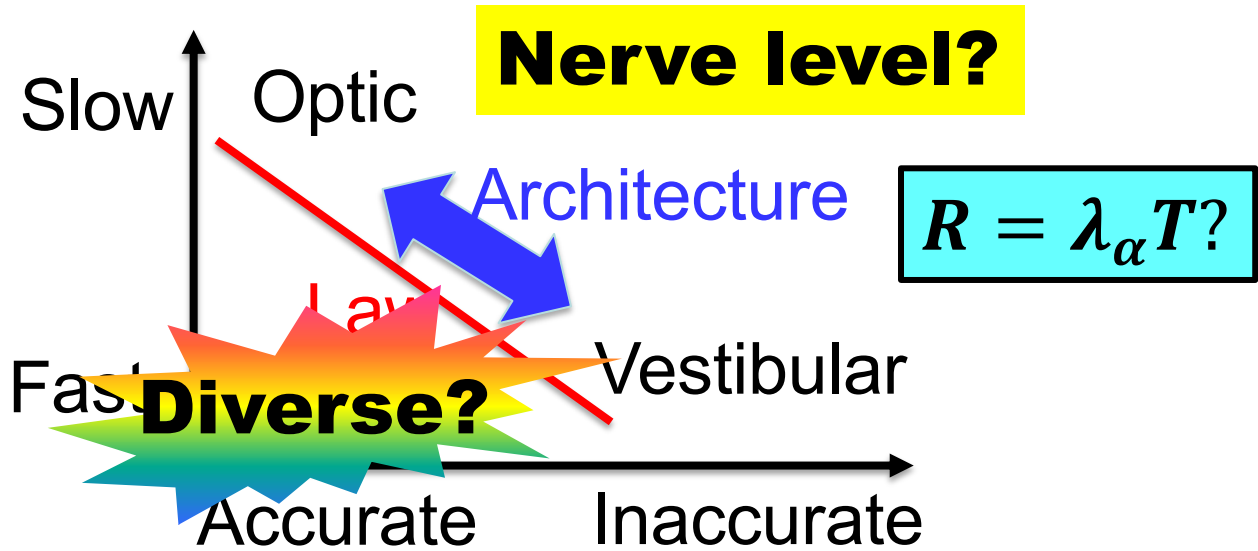
Olfactory

Optic



cranial nerves

Vestibular



Nerve level?

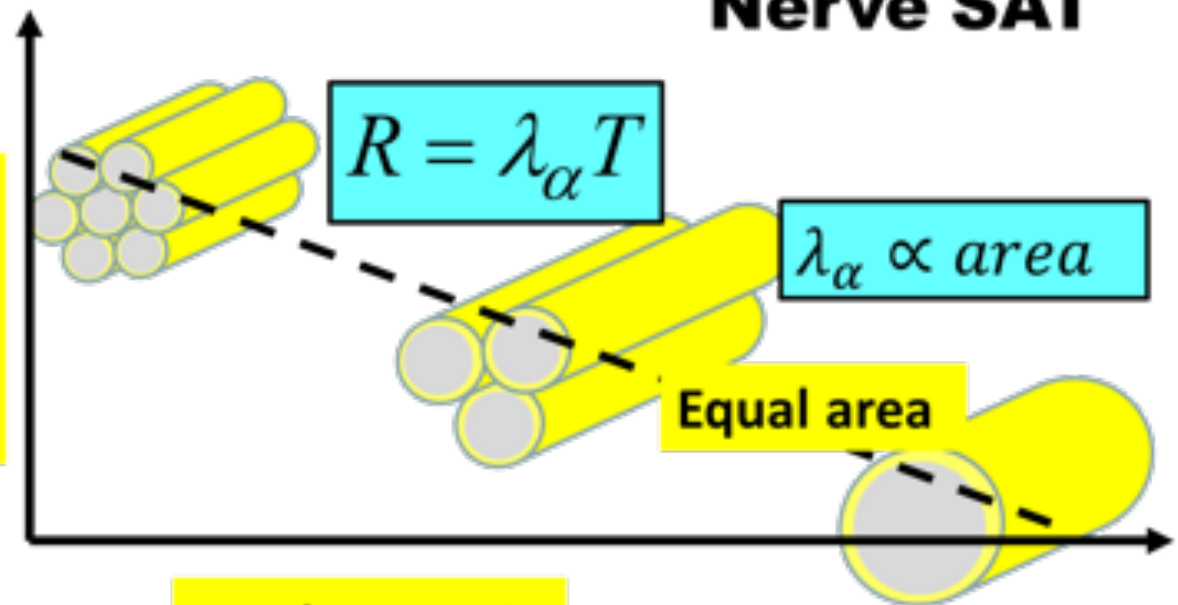
$$R = \lambda_{\alpha} T?$$

Diverse?

Nerve SAT

$\log(T)$
log(delay)

← Fast



$$R = \lambda_{\alpha} T$$

$$\lambda_{\alpha} \propto \text{area}$$

Equal area

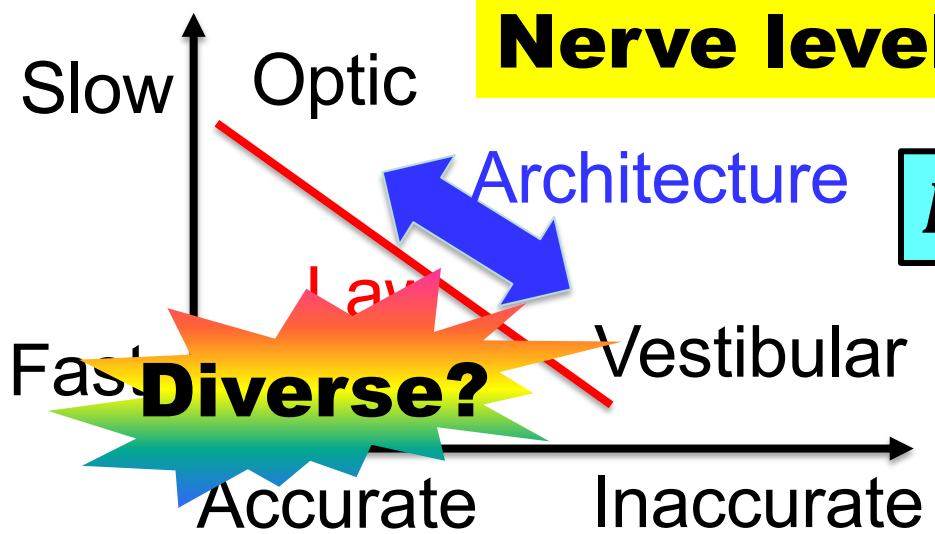
← Accurate

$-\log(R)$

$-\log(\text{bandwidth})$

Yorie Nakahira
Terry Sejnowski
Simon Laughlin
(Peter Sterling)

Nerve level?



Diverse?

$$R = \lambda_{\alpha} T?$$

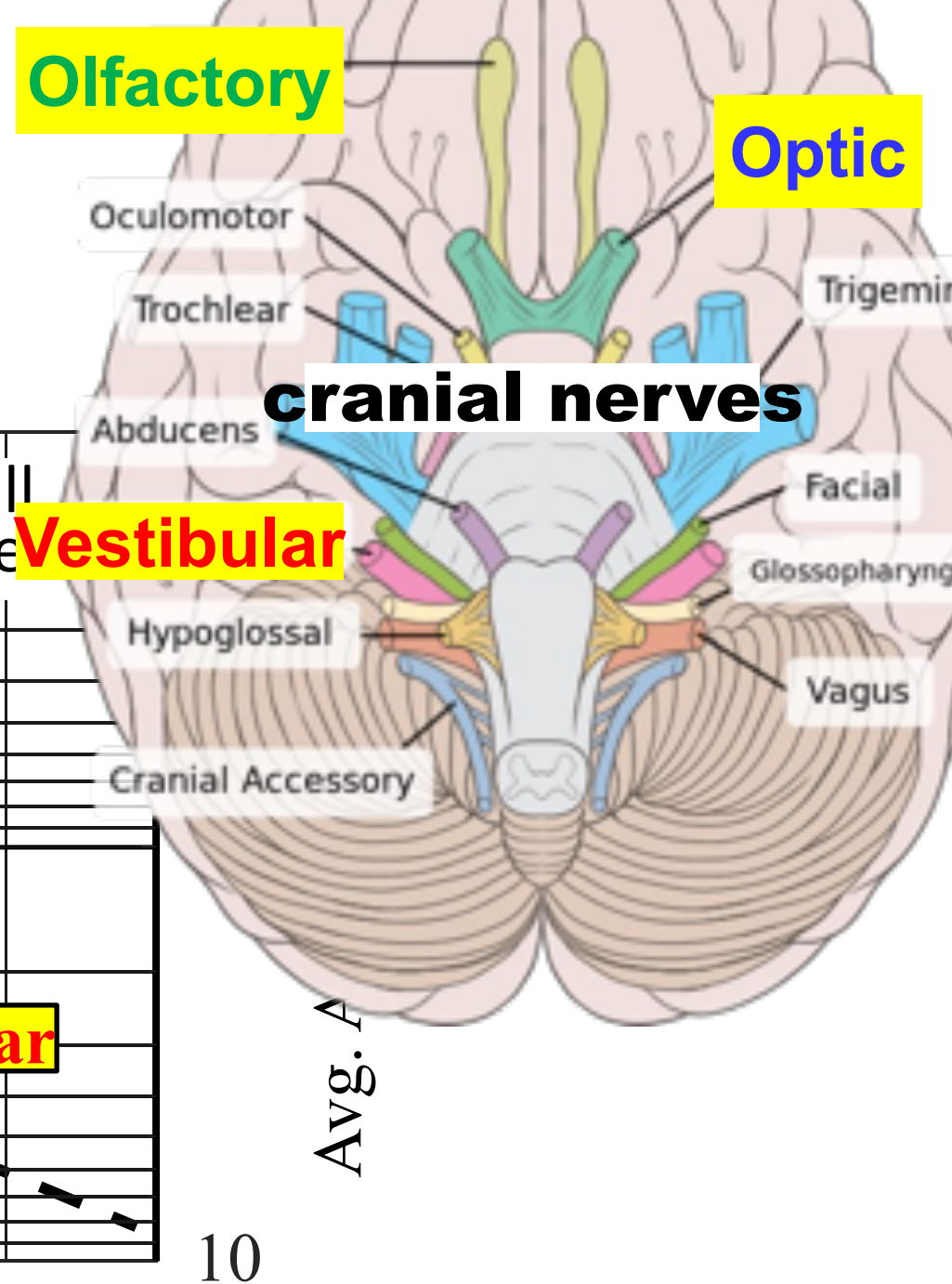
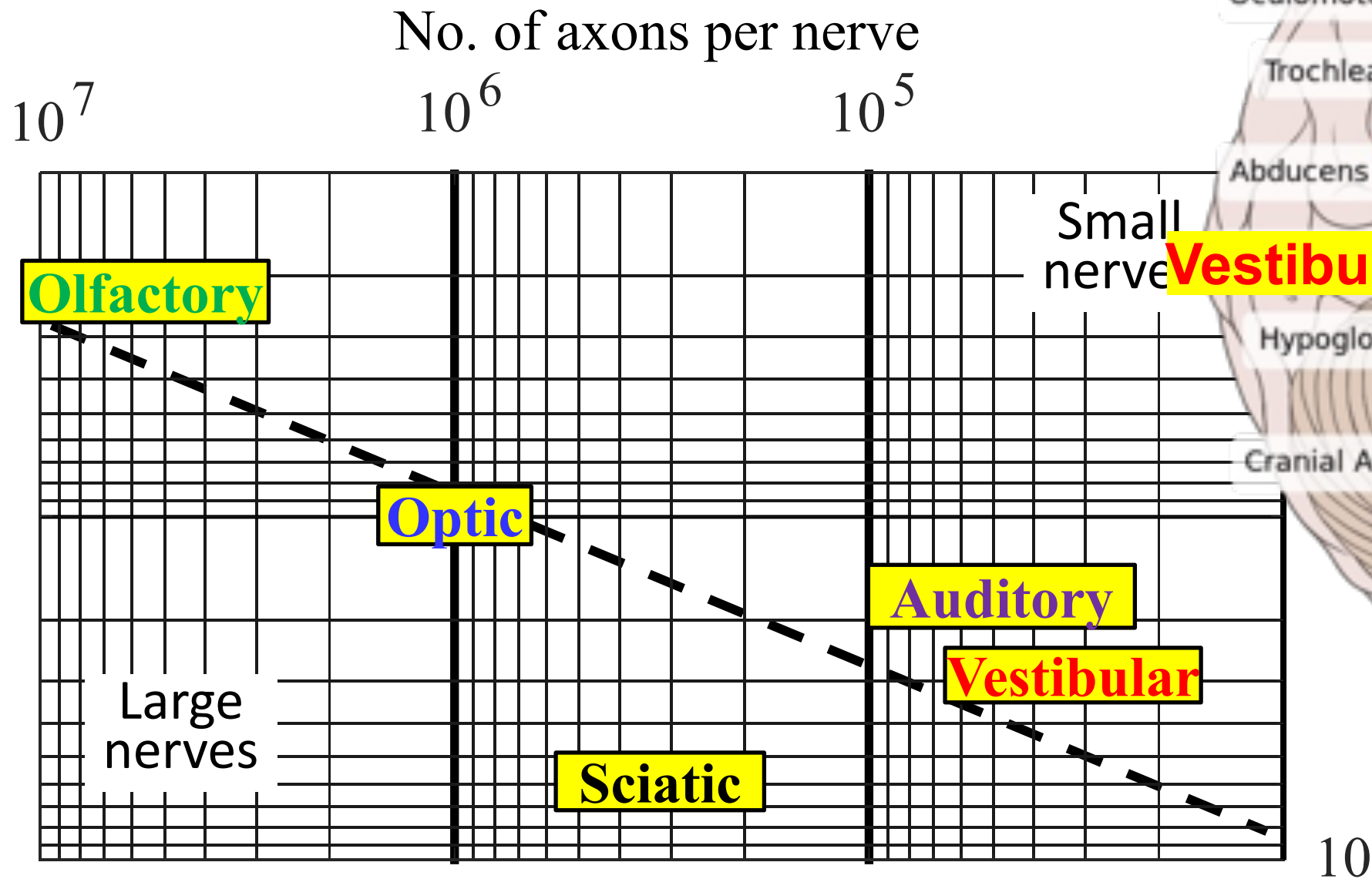
Slow
Fast
Accurate
Inaccurate

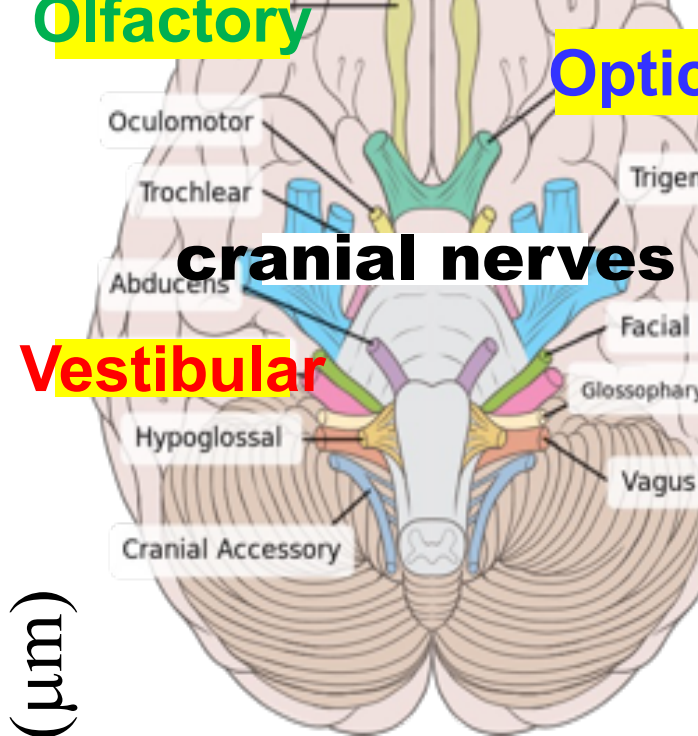
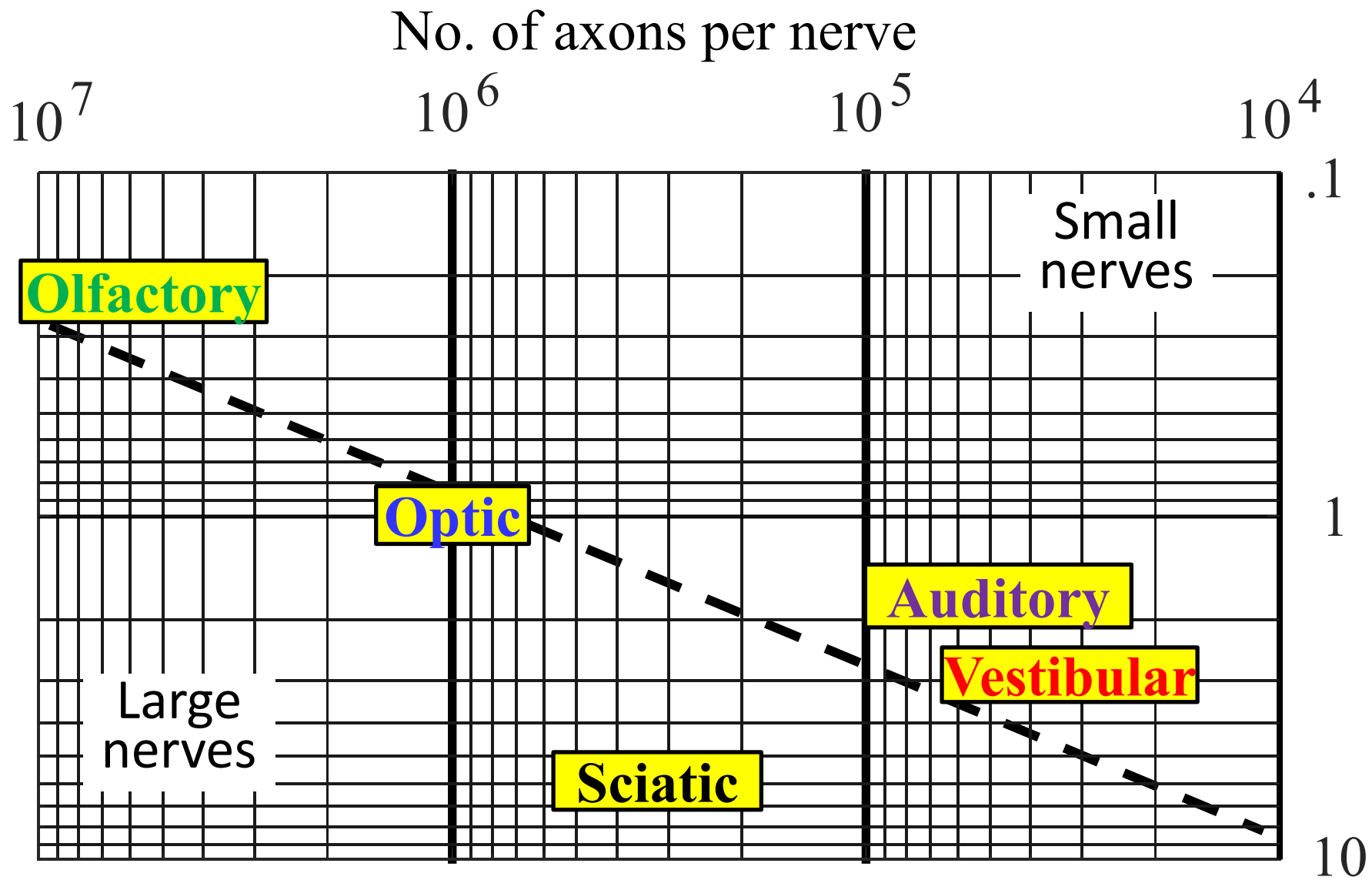
Optic

Vestibular

Architecture

Law

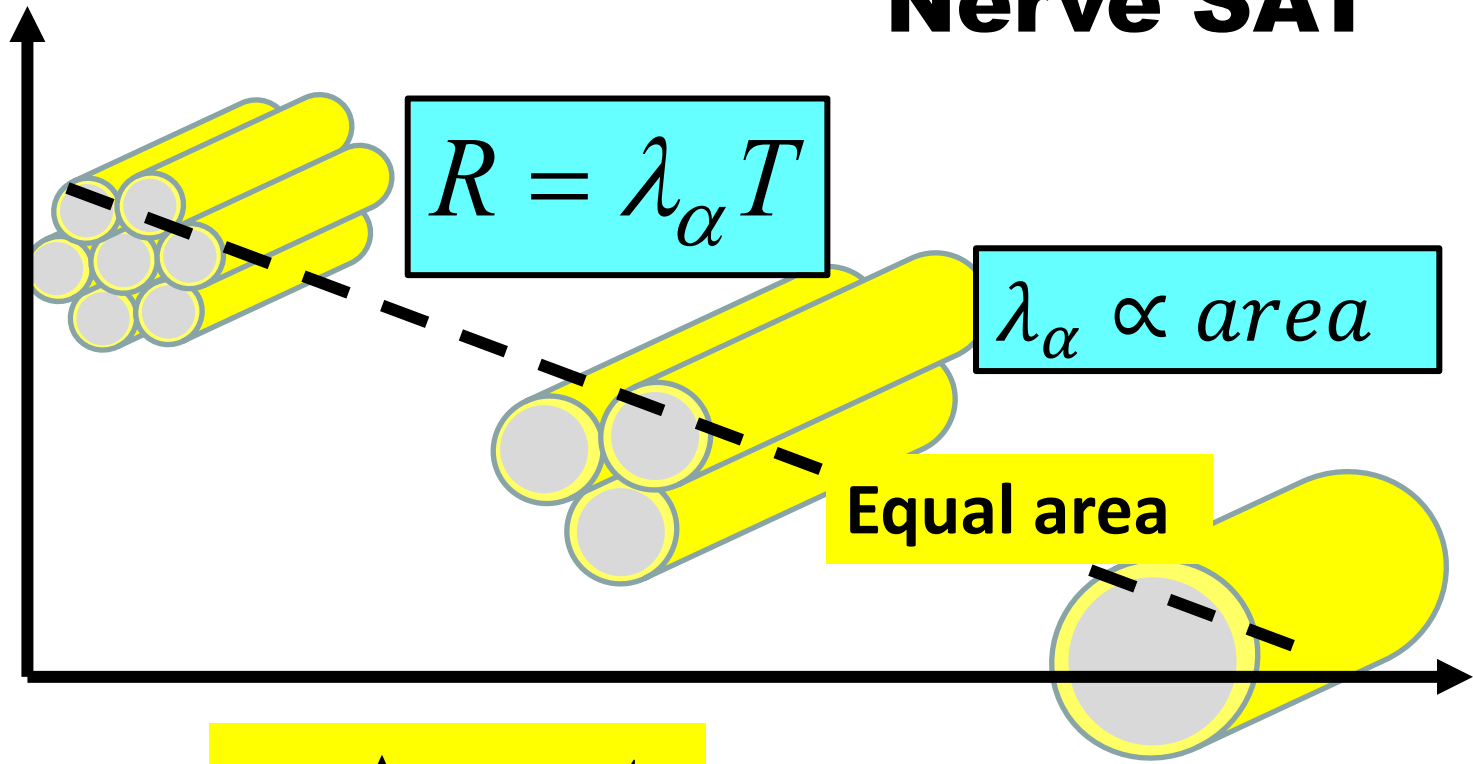




Nerve SAT

$\log(T)$
log(delay)

← Fast



$$R = \lambda_{\alpha} T$$

$$\lambda_{\alpha} \propto \text{area}$$

Equal area

← Accurate

$-\log(R)$
-log(bandwidth)

Yorie Nakahira
Terry Sejnowski
Simon Laughlin
(Peter Sterling)

~~Nerve SAT~~

$\log(\mathcal{T})$

$\log(\text{delay})$

← Fast

Turing

Turing lets $R \rightarrow \infty$

Both Turing and Shannon

- let $\mathcal{T} \rightarrow \infty$ (differently)
- Don't worry about delays

Shannon

$\mathcal{T} \rightarrow \infty$

← Accurate

$-\log(R)$

log(\mathcal{T})

log(delay)

Turing

$R \rightarrow \infty$

← Fast

← Robust

Bode

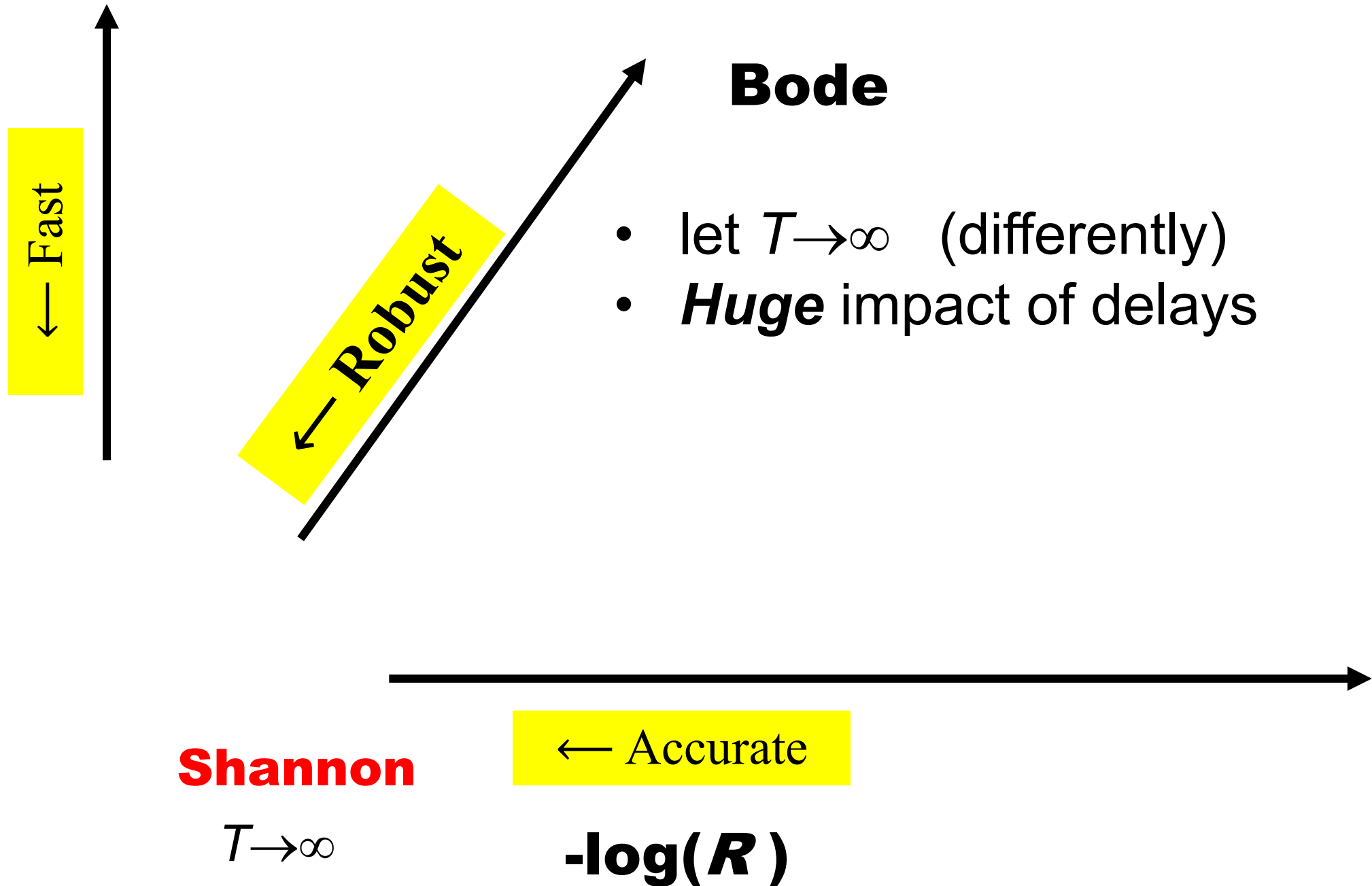
- let $\mathcal{T} \rightarrow \infty$ (differently)
- **Huge** impact of delays

Shannon

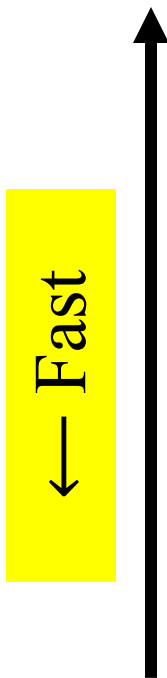
$\mathcal{T} \rightarrow \infty$

← Accurate

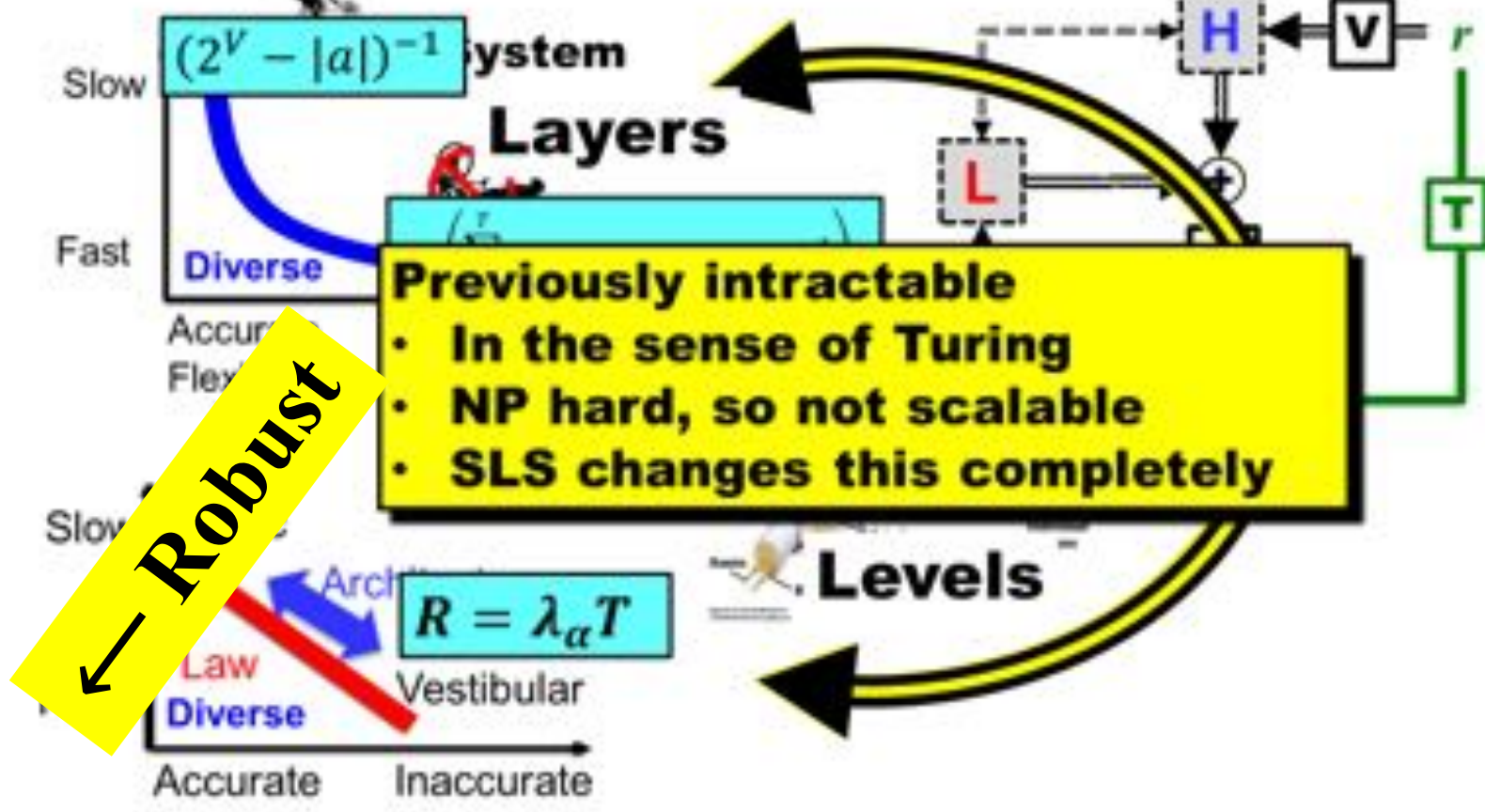
$-\log(R)$



$\log(T)$
log(delay)



Turing



Robust

• **Lost connection with Shannon**
• **Much more needed**

Shannon

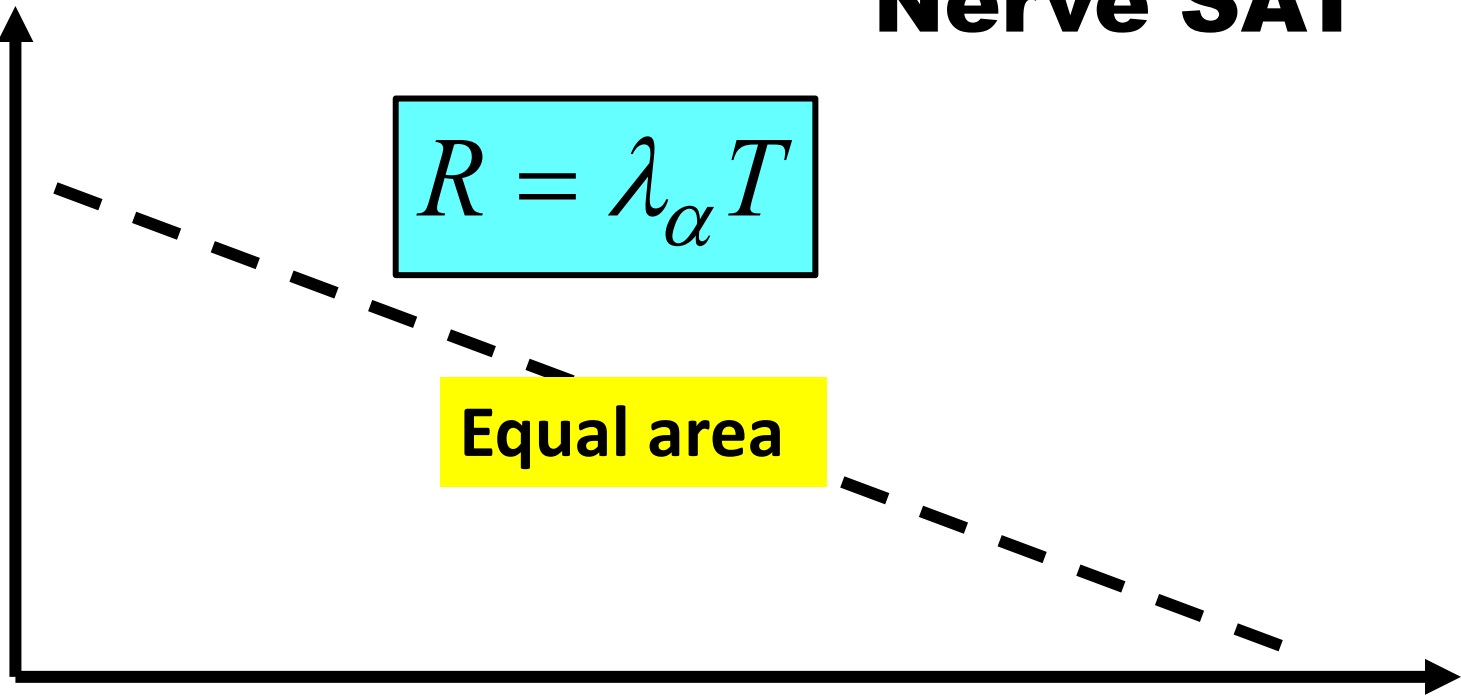


$-\log(R)$

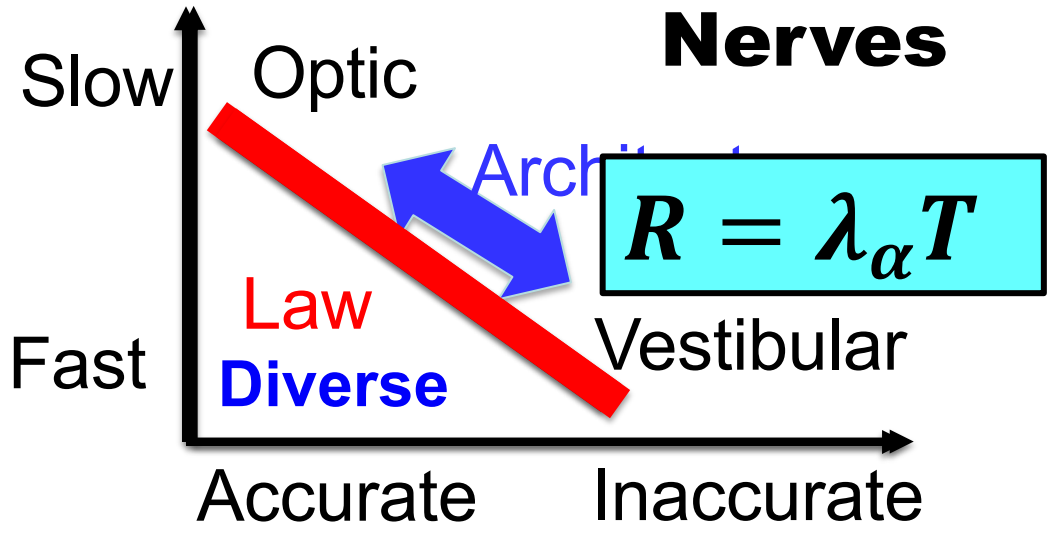
Nerve SAT

log(T)
log(delay)

Fast
↓



Nerves



← Accurate

-log(R)

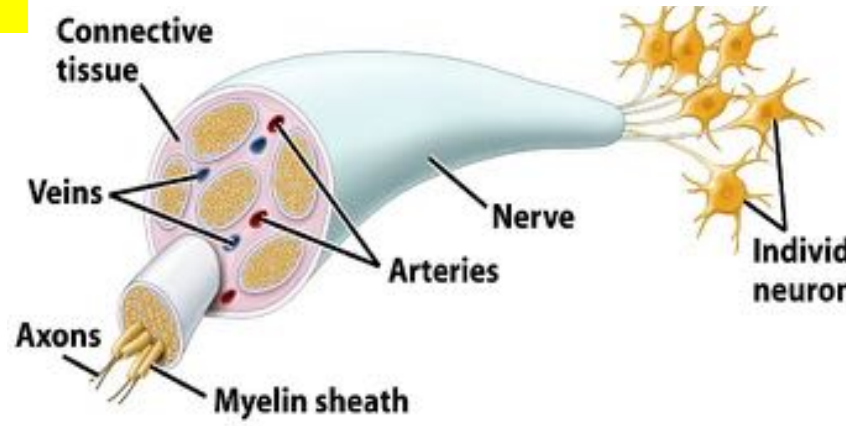


Figure 25-1b Discover Biology 3/e © 2006 W. W. Norton & Company, Inc.

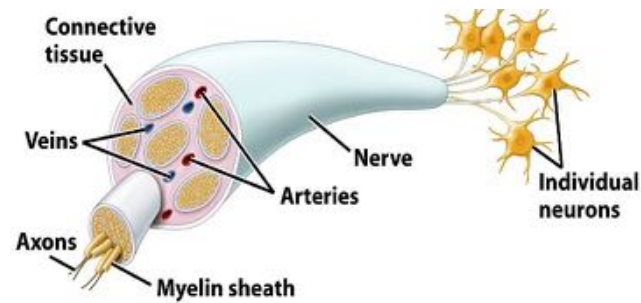
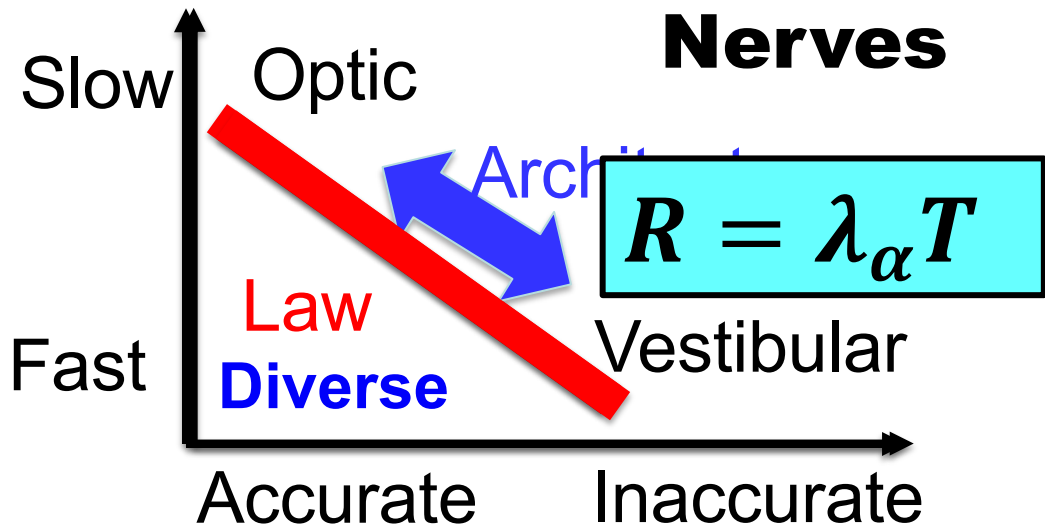
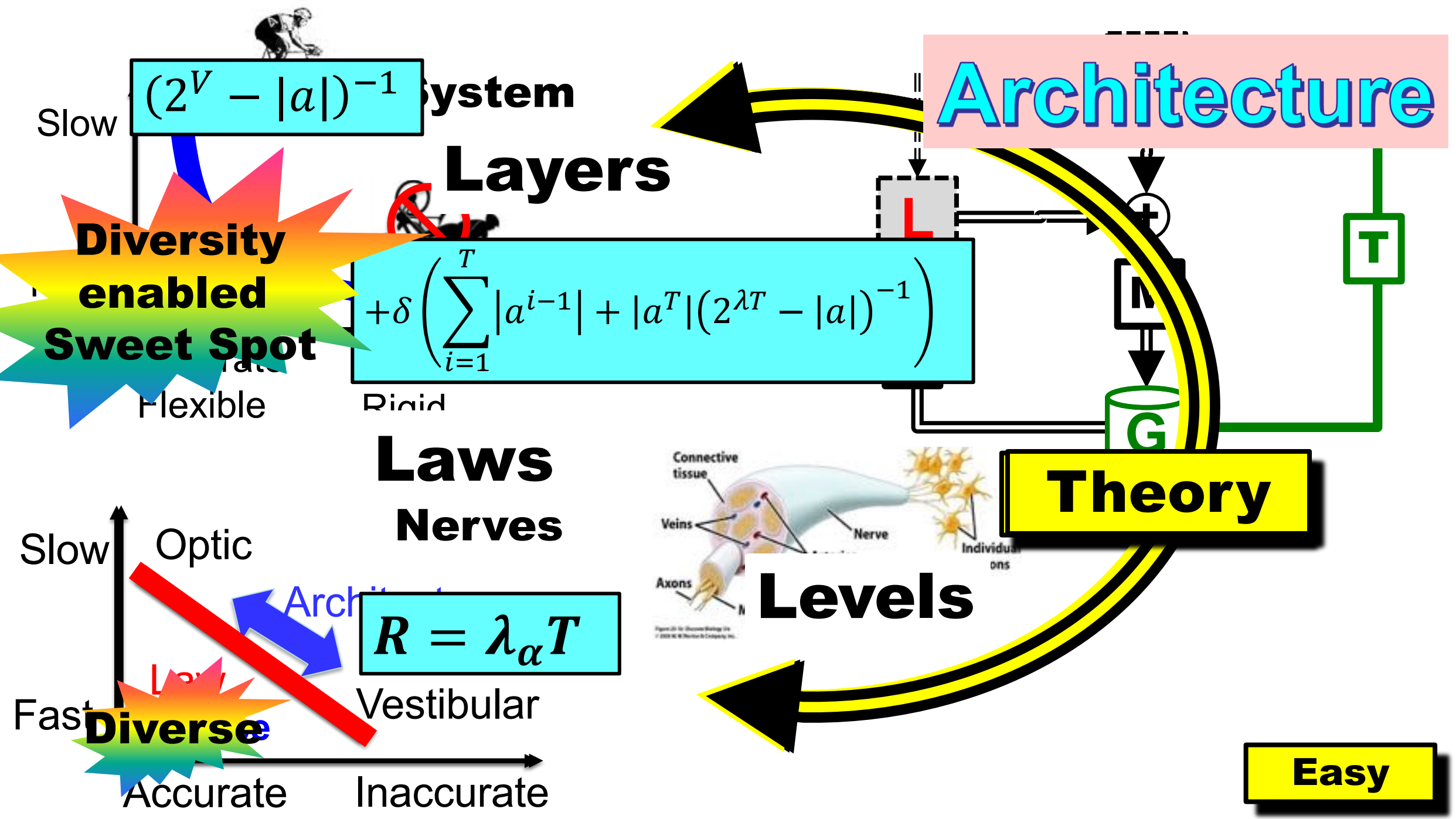
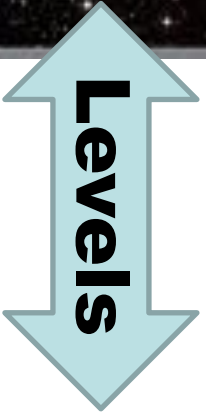
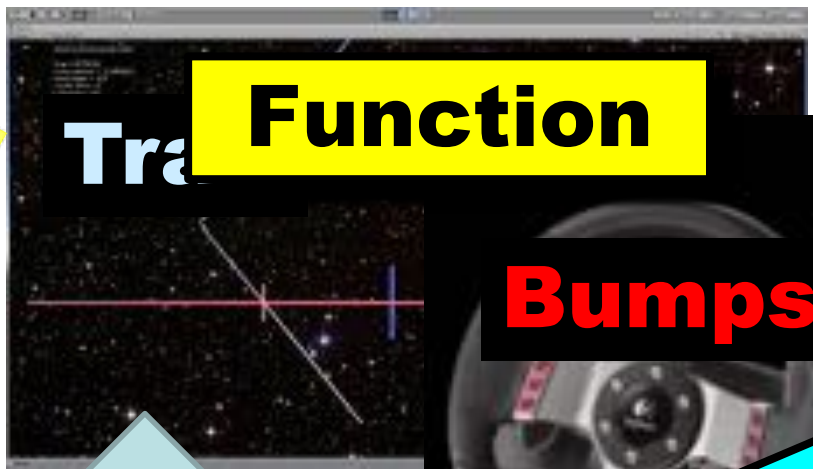
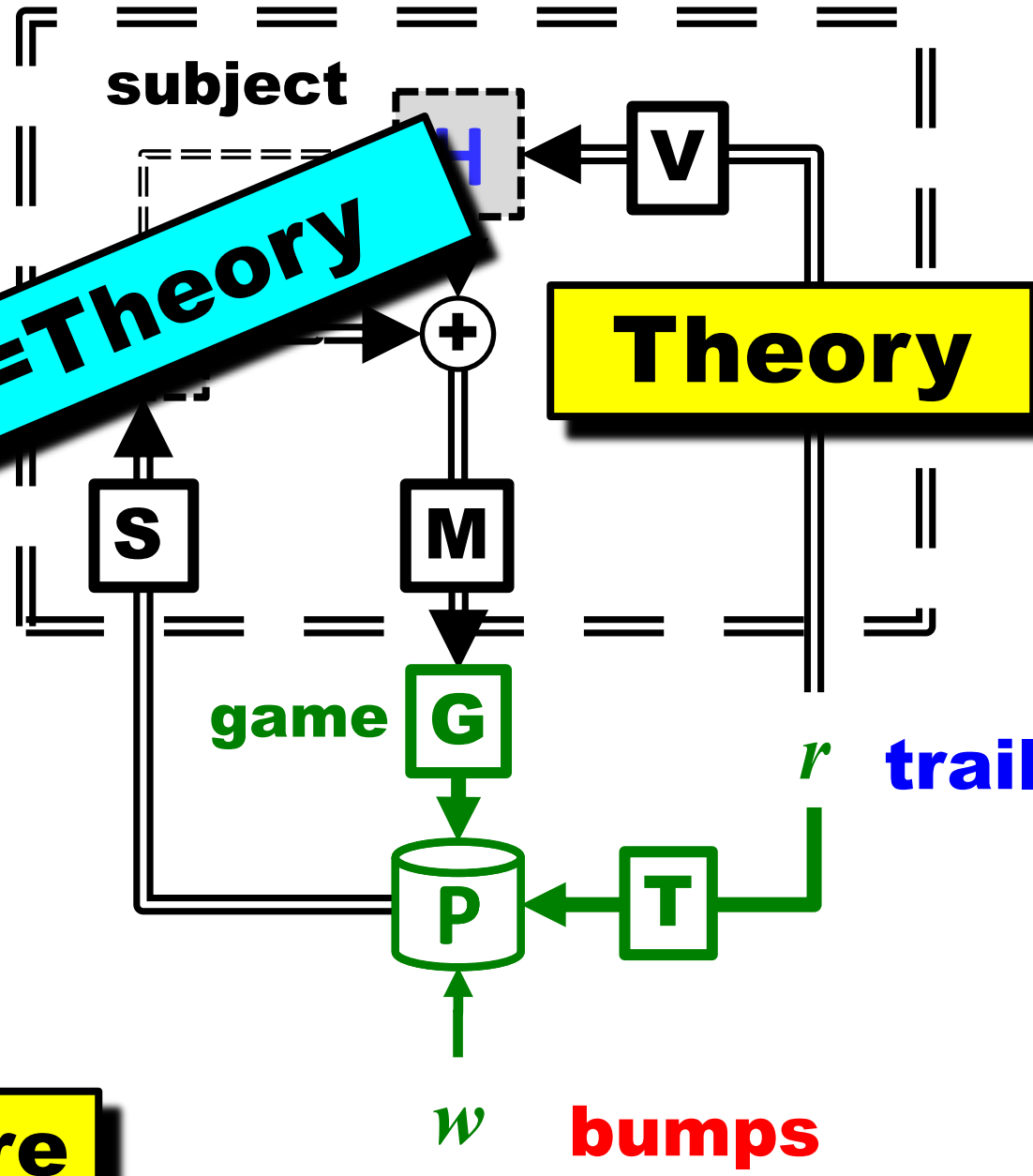
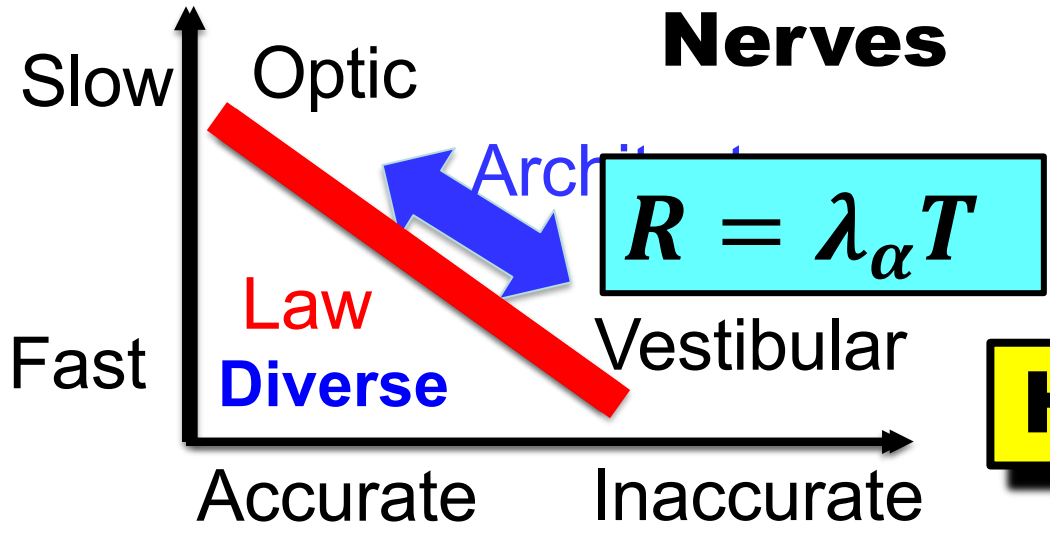


Figure 25-1b. Discover Biology 3/e
© 2004 W.W. Norton & Company, Inc.

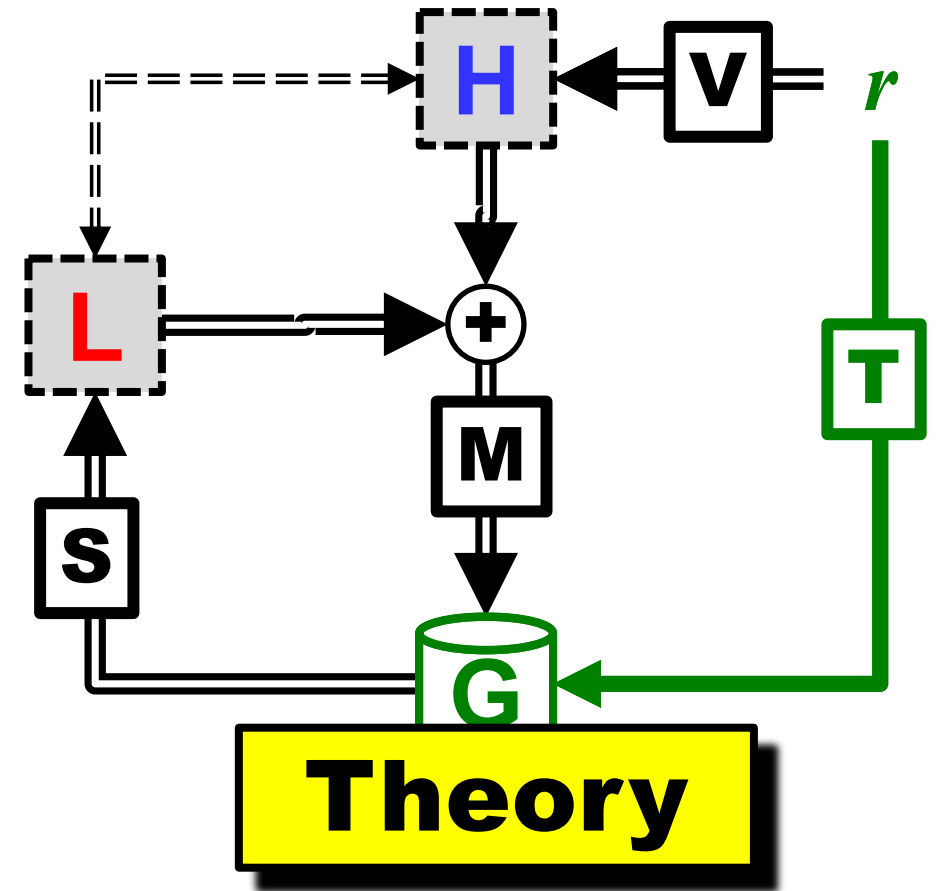




Data=Theory



- Scalar trail and bumps
- Math is easy
- (Experiments are easy)
- **Has no additional *internal structure* (e.g. within cortex)**
- Beyond what is in the diagram
- What next?



- **1 dimensional**
- **scalar trail**
- **scaler bump**

